



# Inflation Rates of Food Subgroups

## La Union : January 2023 (2018=100)

### Food Inflation

# 9.4%<sup>↑</sup>

## January 2023

# 5.9%

## December 2022

# -2.2%

## January 2022

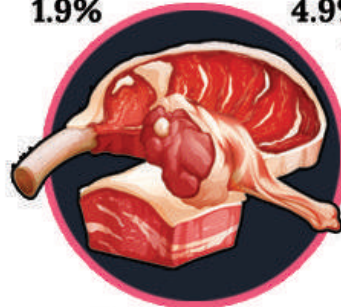
#### Cereals and Cereal Products

<b>December</b>	<b>January</b>
<b>2022</b>	<b>2023</b>
<b>-0.1%</b>	<b>2.8%</b>



#### Meat and Other Parts of Slaughtered Land Animals

<b>December</b>	<b>January</b>
<b>2022</b>	<b>2023</b>
<b>1.9%</b>	<b>4.9%</b>



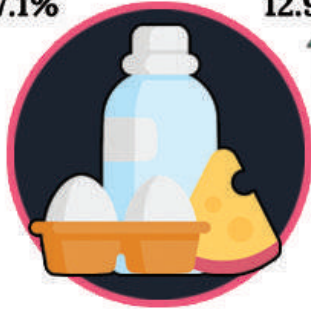
#### Fish and Other Seafood

<b>December</b>	<b>January</b>
<b>2022</b>	<b>2023</b>
<b>1.1%</b>	<b>5.2%</b>



#### Milk, Other Dairy Products, and Eggs

<b>December</b>	<b>January</b>
<b>2022</b>	<b>2023</b>
<b>7.1%</b>	<b>12.9%</b>



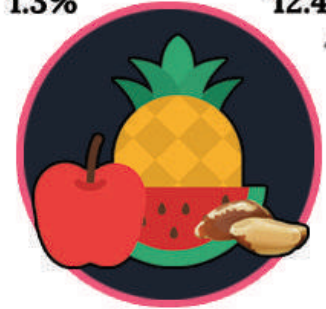
#### Oil and Fats

<b>December</b>	<b>January</b>
<b>2022</b>	<b>2023</b>
<b>11.7%</b>	<b>16.5%</b>



#### Fruits and Nuts

<b>December</b>	<b>January</b>
<b>2022</b>	<b>2023</b>
<b>1.3%</b>	<b>12.4%</b>



#### Vegetables, Tubers, Plantains, Cooking Bananas and Pulses

<b>December</b>	<b>January</b>
<b>2022</b>	<b>2023</b>
<b>35.0%</b>	<b>34.9%</b>



#### Sugar, Confectionery and Desserts

<b>December</b>	<b>January</b>
<b>2022</b>	<b>2023</b>
<b>46.7%</b>	<b>45.7%</b>



#### Ready-Made Food and Other Food Products Not Elsewhere Classified

<b>December</b>	<b>January</b>
<b>2022</b>	<b>2023</b>
<b>5.4%</b>	<b>6.8%</b>



Data Source: Philippine Statistics Authority | Image Source: fiaticon.com, freepik.com, vecteezy.com



<http://rso01.psa.gov.ph/launion>



[launion@psa.gov.ph](mailto:launion@psa.gov.ph)



[/psa.launion.3](https://www.facebook.com/psa.launion.3)



[@psaLaUnion](https://twitter.com/psaLaUnion)