

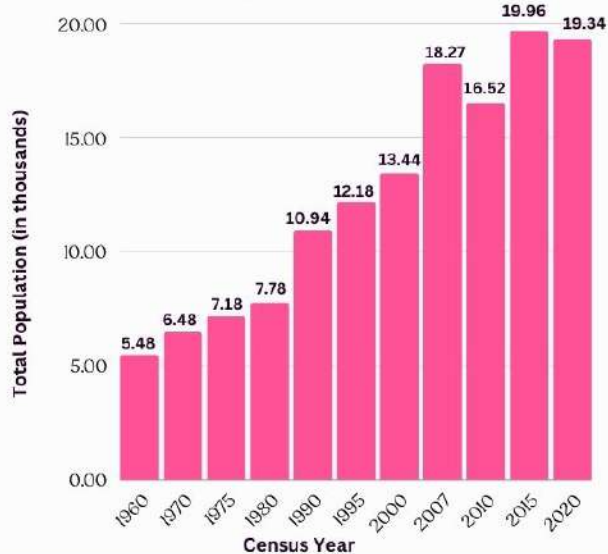
2020 CENSUS OF POPULATION AND HOUSING

PUGO, LA UNION

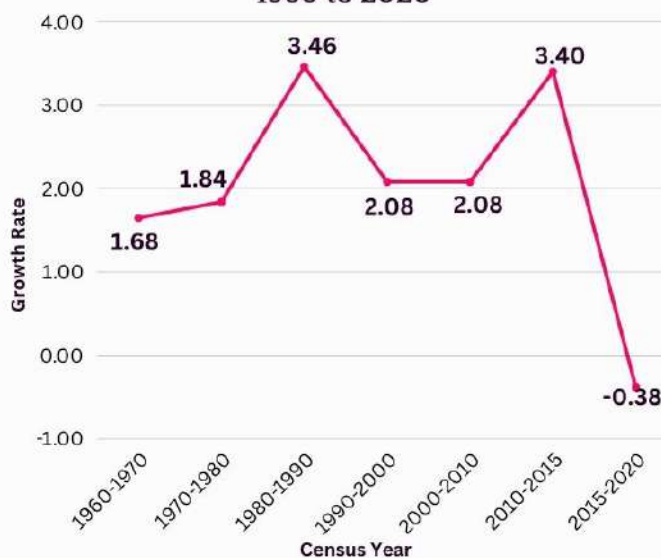


TOTAL POPULATION & GROWTH RATE

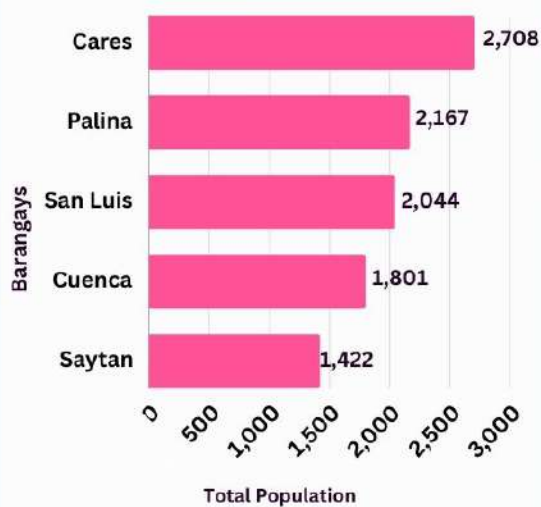
Total Population by Censal Year:
1960 to 2020



Intercensal Population Growth Rate:
1960 to 2020



Top 5 Most Populous Barangays



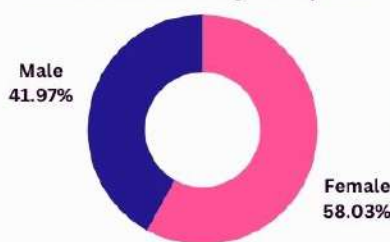
Based on the 2020 Census of Population and Housing (2020 CPH), the municipality of Pugo, La Union recorded a total population of 19,337 persons as of 01 May 2020.

The population growth rate from 2015 to 2020 translated to -0.38 which indicates that that about 4 persons were deducted per year for every 1,000 persons in the population.

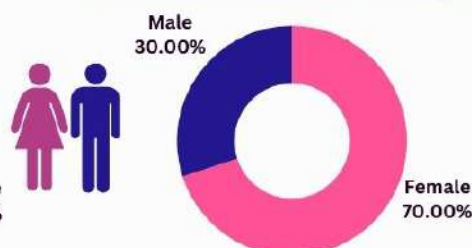
Among the 14 barangays in Pugo, La Union, Cares was the most populous making up 14.00 percent of the total municipal population.

MEN & WOMEN

Percentage Distribution of Individuals with Academic Degrees by Sex



Percentage Distribution of Individuals Who Pursued Post-Baccalaureate Course by Sex



Distribution of Civil Status Among Household Population 10 Years Old and Over

NEVER MARRIED
38.63%

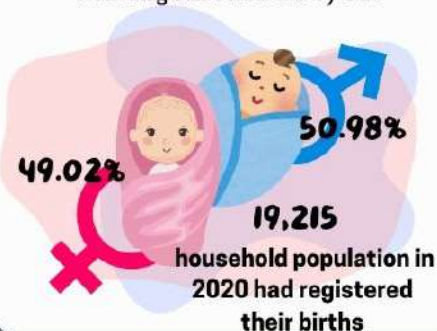
MARRIED
42.26%

The rest of the population was categorized as follows: widowed (5.12 percent), divorced/separated (1.86 percent), common-law/live-in (12.11 percent), and unknown (0.02 percent).

Among those with an academic degree, the females (58.03 percent) outnumbered the males (41.97 percent). Similarly, more females (70.00 percent) than males (30.00 percent) had pursued post-baccalaureate courses.

Among the 19,215 household population whose births were registered with the LCRO, 9,796 persons (50.98 percent) were males, while 9,419 persons (49.02 percent) were females.

Distribution of the Household Population with Registered Births by Sex



Data Source: Philippine Statistics Authority