

SPECIAL RELEASE

FISHERIES SITUATIONER IN LA UNION 3RD QUARTER 2021

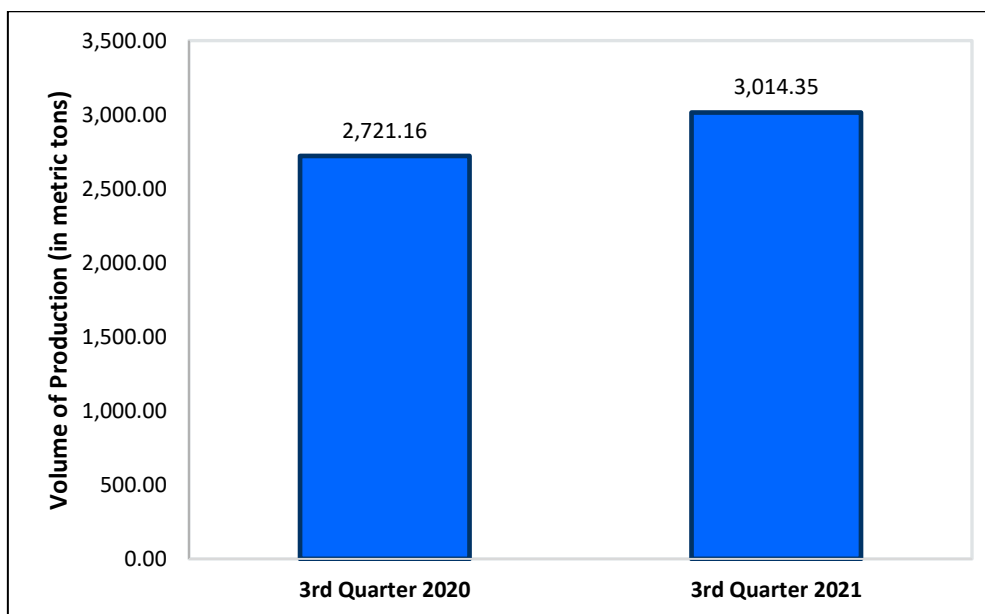
Date of Release: 30 November 2021

Reference No. 2021-75

La Union's fisheries production grows in 3rd Quarter 2021

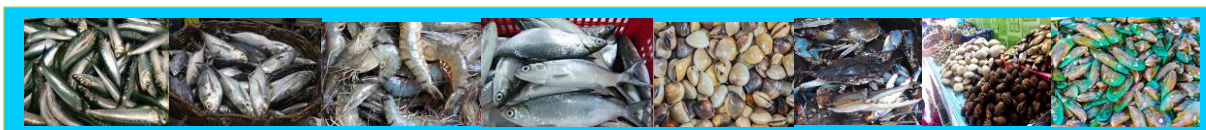
La Union's total volume of fisheries production in 3rd quarter 2021 was recorded at 3,014.35 metric tons, an increase of 10.77 percent from the 2,721.16 metric tons production in 3rd quarter 2020. (Figure 1)

**Figure 1. Volume of Fisheries Production
La Union: 3rd Quarter 2020 and 3rd Quarter 2021**



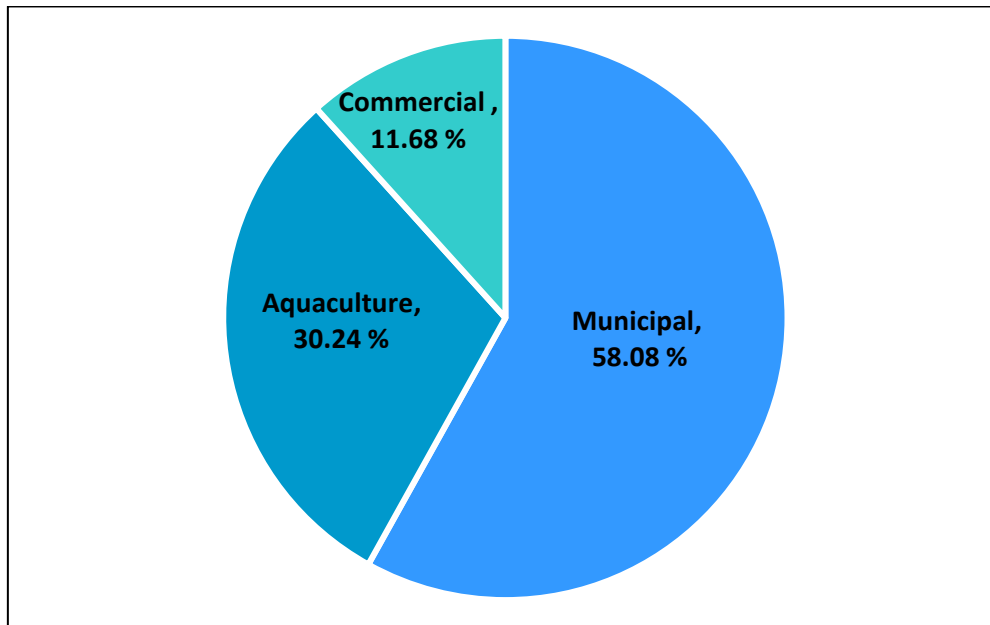
Source: Philippine Statistics Authority

Among the fisheries subsectors, Municipal fisheries posted the largest contribution to the fisheries output in the province in 3rd quarter 2021 with a share of 1,750.62 metric tons or 58.08 percent of the total fisheries production of the province. Aquaculture ranked second with 911.55 metric tons contributing 30.24 percent to the total fisheries production of the province. Commercial fisheries had the smallest contribution to the



total volume of production in the province with 352.18 metric tons or 11.68 percent share. (Figure 2)

Figure 2. Percentage Distribution of Fisheries Production by Subsector La Union: 3rd Quarter 2021



Source: Philippine Statistics Authority

In 3rd quarter 2021, the top five species in terms of volume of production were: milkfish (bangus) with 764.30 metric tons (25.36 percent share); other marine fisheries with 431.35 metric tons (14.31 percent share); oyster with 212.61 metric tons (7.05 percent share); threadfin bream (bisugo) with 204.14 metric tons (6.77 percent share); and slipmouth (sapsap) with 177.37 metric tons (5.88 percent share).

Municipal Fisheries

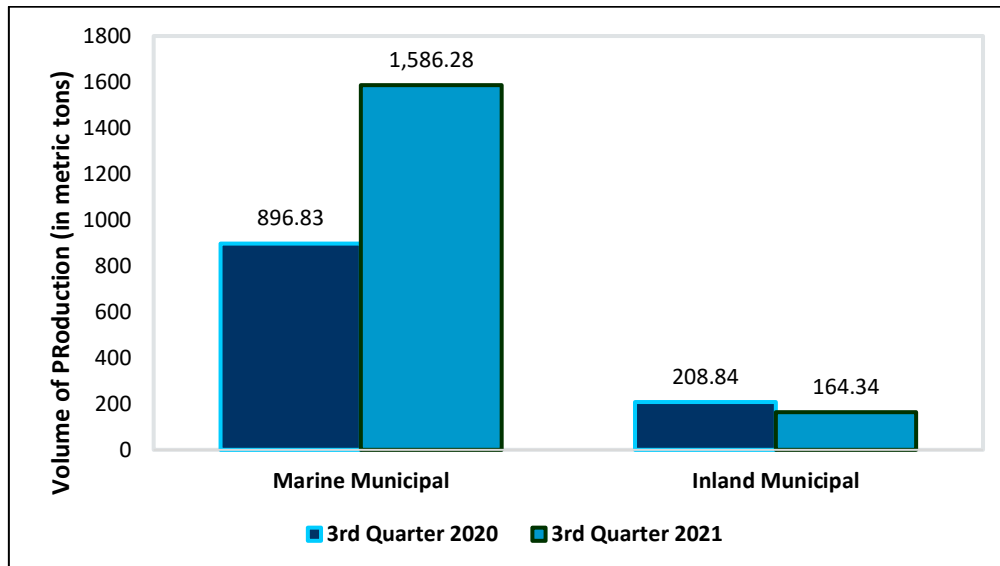
The total municipal fisheries production in La Union increased by 58.33 percent from the estimated production of 1,105.67 metric tons in 3rd quarter 2020 to 1,750.62 metric tons in the same quarter of 2021. This subsector was comprised of 90.61 percent production from marine municipal fisheries and 9.39 percent production from inland municipal fisheries.

The volume of production from marine municipal fisheries went up by 76.88 percent from 896.83 metric tons in 3rd quarter 2020 to 1,586.28 metric tons in 3rd quarter 2021. Meanwhile, the volume of production from inland municipal fisheries dropped by



21.31 percent from 208.84 metric tons in 3rd quarter 2020 to 164.34 metric tons in 3rd quarter 2021. (Figure 3)

**Figure 3. Volume of Municipal Fisheries Production by Subsector
La Union: 3rd Quarter 2020 and 3rd Quarter 2021**



Source: Philippine Statistics Authority

Municipal fisheries data were gathered from administrative records of the Philippine Fisheries Development Authority (PFDA), Local Government Unit (LGU) - managed landing centers and traditional landing centers.

Aquaculture

The aquaculture production in La Union was posted at 911.55 metric tons in 3rd quarter 2021. This translates to a decrease of 29.73 percent from the 1,297.23 metric tons production in 3rd quarter 2020. (Figure 4)

Milkfish dominated the aquaculture production of the province in 3rd quarter 2021 with 757.42 metric tons. It was distantly followed by oyster production with 150.87 metric tons. Milkfish production had a double-digit percent decrease of 33.52 percent from 1,139.40 metric tons in the same period of 2020 while oyster production had a single-digit decrease of 1.89 percent from its 153.77 metric tons output in the same period a year ago.

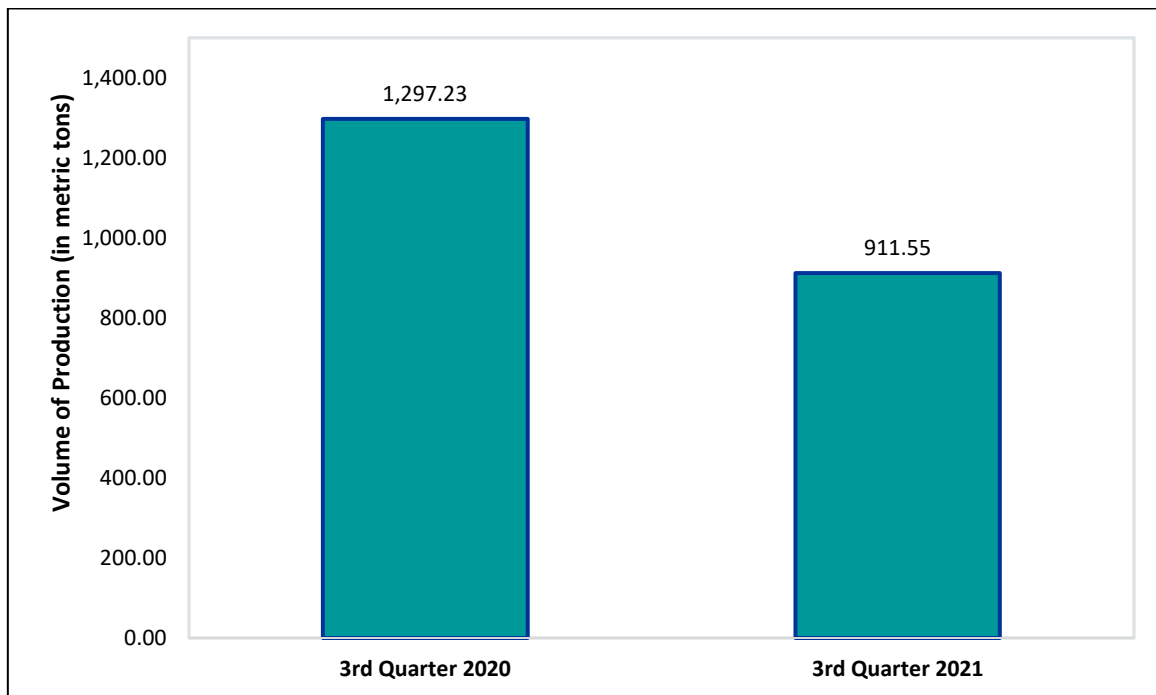


Management System
ISO 9001:2015
www.tuv.com
ID 9108640991



The Fifth Bldg., Gov. Ancheta St., Barangay IV, City of San Fernando, La Union
Telephone Number: (072) 888-5740
psa.launion@yahoo.com

**Figure 4. Volume of Aquaculture Production
La Union: 3rd Quarter 2020 and 3rd Quarter 2021**



Source: Philippine Statistics Authority

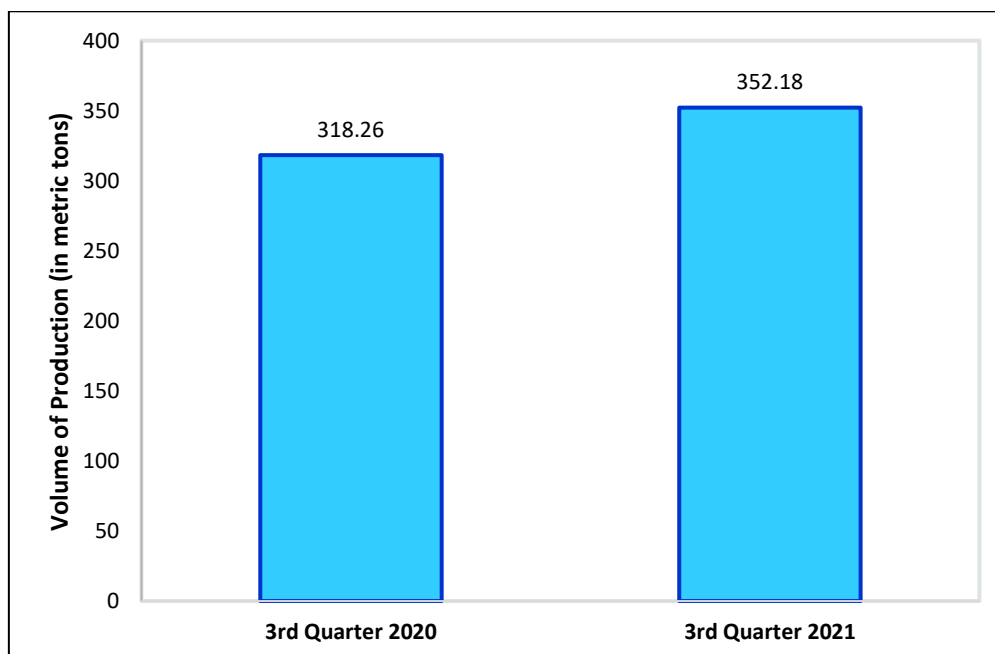
Commercial Fisheries

The volume of production from commercial fisheries was posted at 352.18 metric tons in 3rd quarter 2021. It went up by 10.66 percent from 318.26 metric tons in the same period a year ago. (Figure 5)

Data for commercial fisheries were obtained from LGU-managed fish landing centers, privately-managed fish landing centers and traditional fish landing centers.



**Figure 5. Volume of Commercial Fisheries Production
La Union: 3rd Quarter 2020 and 3rd Quarter 2021**



Source: Philippine Statistics Authority

Value of fisheries production in La Union increases in 3rd quarter 2021

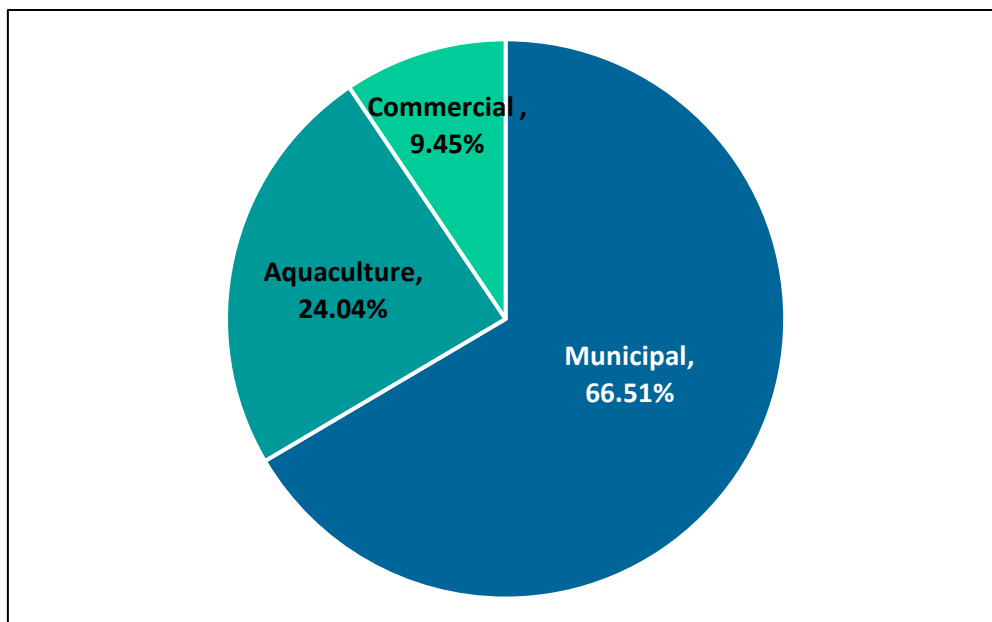
The total value of all fisheries production in La Union in 3rd quarter 2021 was PhP457,166.55. This is 53.60 percent higher than its value in the same quarter a year ago of PhP297,641.34.

In terms of value of production, municipal fisheries topped the three subsectors in 3rd quarter 2021 with a share of 66.51 percent to the total value of fisheries production in the province. The remaining 33.49 percent of the provincial total value of production was contributed by aquaculture with 24.04 percent share and commercial fisheries with 9.45 percent share. (Figure 6)



Municipal and commercial fisheries subsectors exhibited an increase in their respective value of fisheries production compared with their value of fisheries production in 3rd quarter 2020. Municipal fisheries recorded an increase of 122.88 percent from PhP136,423.71 in 3rd quarter 2020 to PhP304,066.49 in 3rd quarter 2021 while commercial fisheries grew by 12.74 percent from PhP38,315.23 to PhP43,198.15. On the other hand, the value of aquaculture production decreased by 10.58 percent from PhP122,902.40 in 3rd quarter 2020 to PhP109,901.91 in 3rd quarter 2021.

**Figure 6. Percentage Distribution of Value of Fisheries Production by Subsector
La Union: 3rd Quarter 2021**



Source: Philippine Statistics Authority



The Fifth Bldg., Gov. Ancheta St., Barangay IV, City of San Fernando, La Union
Telephone Number: (072) 888-5740
psa.launion@yahoo.com

TECHNICAL NOTES

Aquaculture is a fishery operation involving all forms of raising and culturing of fish and other fishery species in fresh, brackish and marine water areas. The operation is comprised of activities from stocking to harvesting of species under controlled conditions in farming facility called aquafarm.

Aquaculture Production refers to the volume harvested from the aquafarm. It includes those species harvested in marketable/matured size and in fresh form.

Inland Municipal Fishing – the catching of fish, crustaceans, mollusks and other aquatic animals and plants in inland waters like lakes, rivers, dams, marshes, etc. using simple gears and fishing boats some of which are non-motorized with a capacity of less than three gross tons, or fishing not requiring the use of fishing boats.

Landing Center is a place where the fish catch and other aquatic products are unloaded and traded. Traditional landing center is a type of landing center where fishermen could unload their catch and/or dock their fishing boats without any obligation or payment for the use of the place.

Quarterly Aquaculture Survey is a quarterly survey that generates estimates of volume and value of production per aquafarm type and species for the subsector.

Quarterly Inland Fisheries Survey is a survey on volume and price of fish by species, caught by households engaged in inland fishing. It gathers quarterly data with monthly catch from sample fishing households. Respondents are fishermen or any knowledgeable member of the sample household.

Quarterly Commercial Fisheries Survey (Traditional Landing Center) is a quarterly survey on the volume of fish unloading in traditional landing centers and the price of fish by species. It gathers data on a quarterly basis but the information that is collected is about monthly fish unloading.

Quarterly Commercial Fisheries Survey (Philippine Fisheries Development Authority (PFDA), Local Government Units (LGUs), Privately-Managed Landing Centers) is the gathering of data from the records of the PFDA, LGU and privately-managed landing centers. It is done on a quarterly basis but the information being collected is on each of the three months included in the reference quarter.

Quarterly Municipal Fisheries Survey (Traditional Landing Center) – is a survey on volume and price of fish, by species, unloaded by fishing boats three gross tons or less. It gathers quarterly data for the entire sample landing center with information on monthly fish unloading.

Quarterly Municipal Fisheries Survey PFDA, LGUs, Privately-Managed Landing Centers is gathering of data on volume and price of fish from administrative records of PFDA and LGU managed landing centers. It is done on a quarterly basis with information from three-month period.



DANITES E. TENIDO, Ph.D.
Chief Statistical Specialist



Management System
ISO 9001:2015



www.tuv.com
ID 9108640991

The Fifth Bldg., Gov. Ancheta St., Barangay IV, City of San Fernando, La Union
Telephone Number: (072) 888-5740
psa.launion@yahoo.com