

# SPECIAL RELEASE

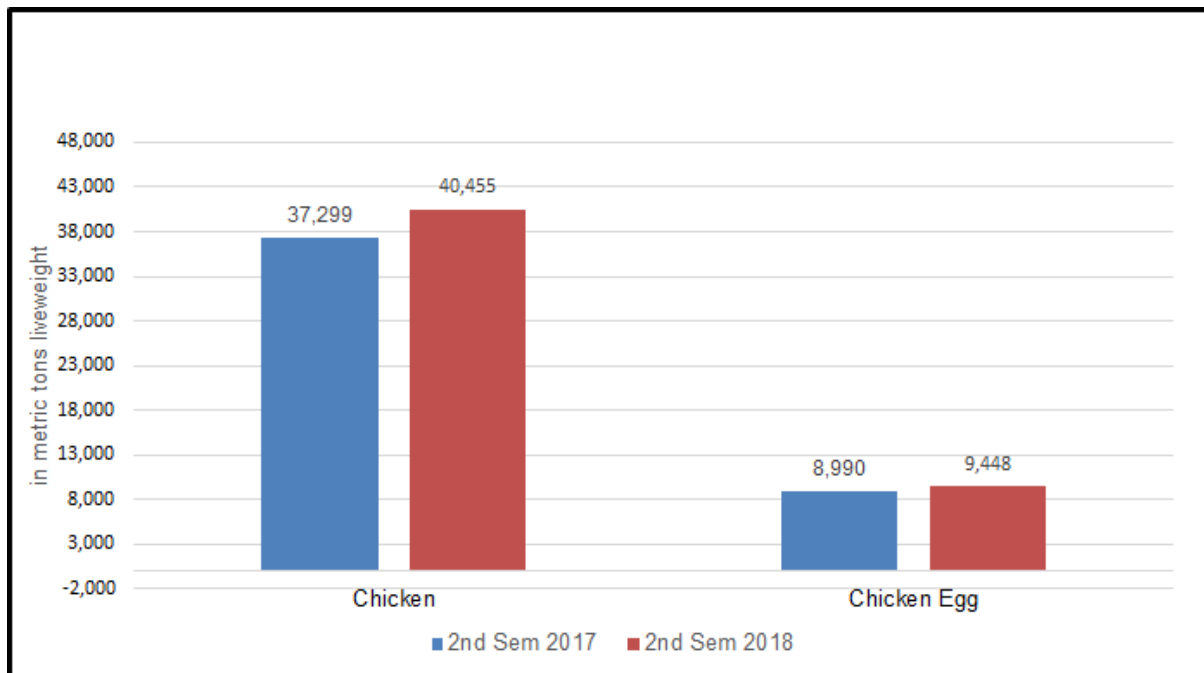
## CHICKEN SITUATIONER IN ILOCOS REGION, 2nd Semester 2018

**Date of Release:** June 18, 2019  
**Reference No.** 2019- 15

### PRODUCTION

Volume of chicken production at 40,455 metric tons in 2<sup>nd</sup> semester of 2018 in Ilocos Region grew by 8.46 percent over last year's 2<sup>nd</sup> semester level of 37,399 metric tons. Likewise, chicken egg production of 9,448 metric tons in 2<sup>nd</sup> semester 2018 posted an increase of 5.09 percent growth from 8,990 metric tons in 2017 of same period.

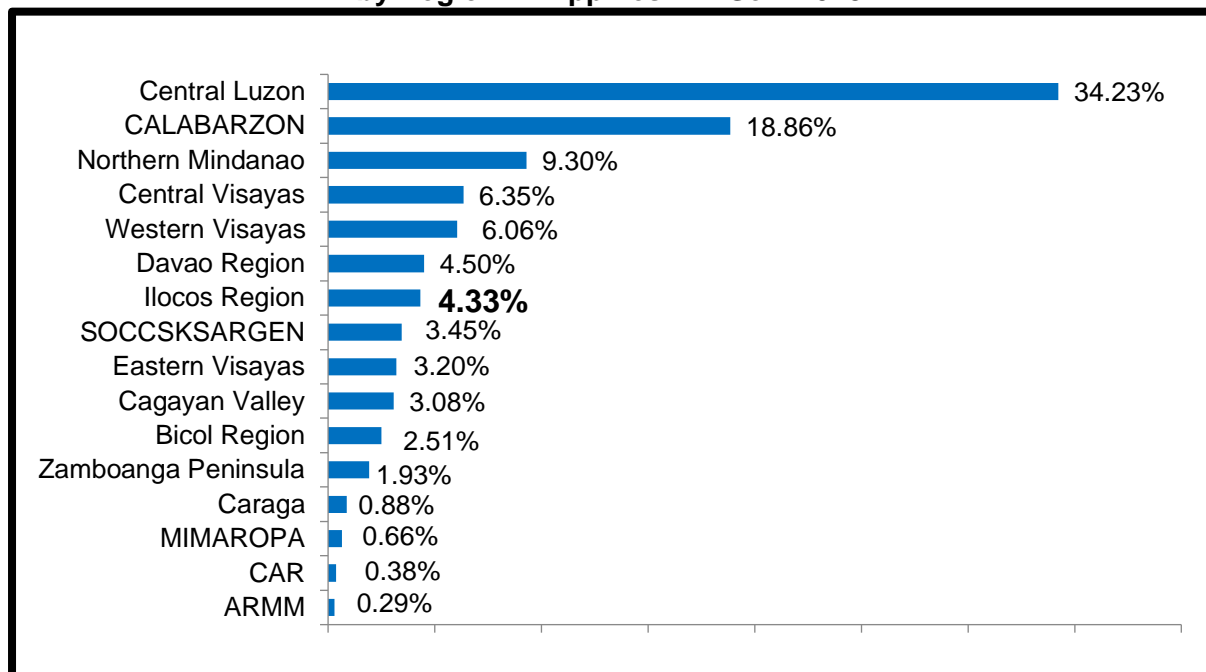
**Figure 1. Volume of Production of Chicken and Chicken Egg,  
Ilocos Region: 2<sup>nd</sup> Sem, 2017-2018**



Source: Philippine Statistics Authority- Backyard Livestock and Poultry Survey (BLPS), Commercial Livestock and Poultry Survey (CLPS) and Compilation of Data From Slaughterhouses and Poultry Dressing Plants (CDSPDP)

Ilocos Region contributed 4.33 percent to the national chicken production of 934,004 metric tons liveweight in 2<sup>nd</sup> semester 2018. It ranked 7th among the top ten chicken producing regions in the country.

**Figure 2. Percent Contribution of Volume of Chicken Production by Region Philippines: 2<sup>nd</sup> Sem 2018**



Source: Philippine Statistics Authority- BLPS, CLPS and CDSPDP

## INVENTORY

As of July 1, 2018, the total chicken inventory in Ilocos Region was estimated at 10.03 million birds. This increased by 6.60 percent compared with 9.41 million birds as of July 1, 2017. Likewise, total chicken inventory posted an increment of 2.98 percent from 9.53 million birds as of October 1, 2017 to 9.82 million birds as of October 1, 2018.

**Table 1. Chicken Inventory by Province, Ilocos Region as of July 1 and October 1, 2017-2018**

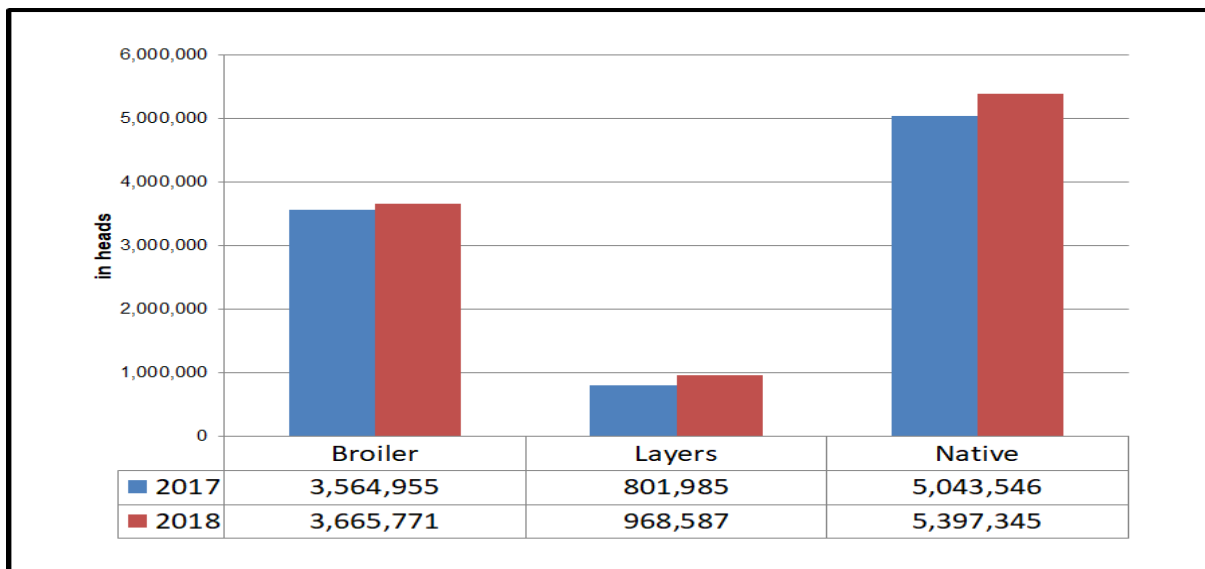
Geolocation	As of July 1		As of October 1		Percent Change	
	2018	2017	2018	2017	As of July 1	As of Oct 1
<b>ILOCOS REGION</b>	10,031,703	9,410,486	9,816,192	9,532,432	6.60	2.98
<b>Ilocos Norte</b>	1,748,850	1,605,047	1,619,798	1,613,747	8.96	0.37
<b>Ilocos Sur</b>	1,180,531	1,208,145	1,134,974	1,111,252	(2.29)	2.13
<b>La Union</b>	1,729,751	1,578,252	1,567,495	1,465,126	9.60	6.99
<b>Pangasinan</b>	5,372,571	5,019,042	5,493,925	5,342,307	7.04	2.84

Source: Philippine Statistics Authority- BLPS and CLPS



Beginning inventory of broiler and native/improved chicken for the 2<sup>nd</sup> semester 2018 recorded respective increases of 2.83 percent and 7.01 percent respectively. Likewise, layer chicken inventory posted an increase of 20.77 percent. As of July 1, 2018, native/improved chicken shared more than half (53.59%) of the total chicken inventory in Ilocos Region, while broiler chicken and layers shared 37.88 percent and 8.52 percent respectively.

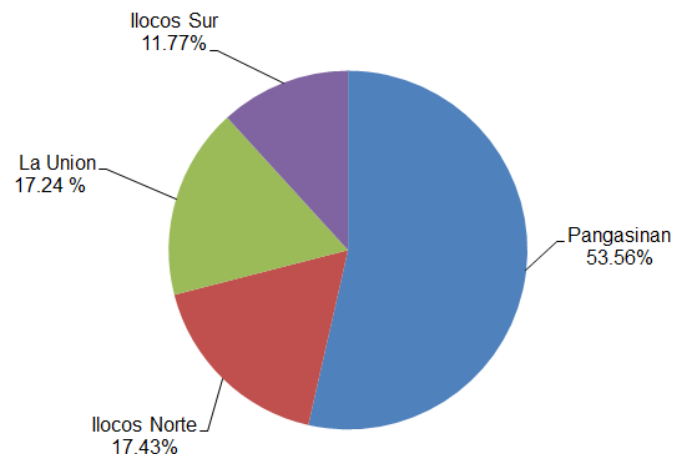
**Figure 3. Chicken Inventory by Type, Ilocos Region as of July 1, 2017 and 2018**



Source: Philippine Statistics Authority- BLPS and CLPS

By provincial breakdown, Pangasinan with 53.56 percent contributed the highest share of the total chicken inventory in the region as of July 1, 2018. This was followed by Ilocos Norte with 17.43 percent share, Ilocos Sur with 11.77 percent share, and La Union with 10.01 percent share.

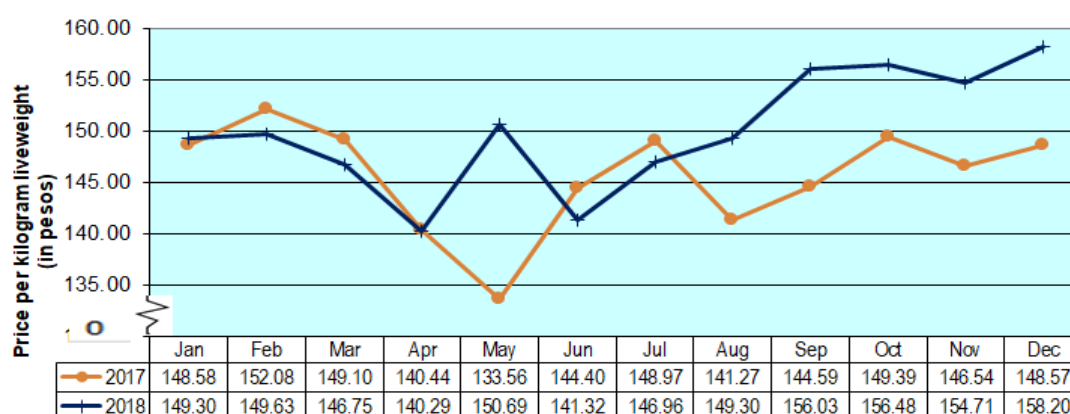
**Figure 4. Percent Distribution of Chicken Inventory by Province, Ilocos Region: As of July 1, 2018**



## PRICES

The average farm price of chicken native as of July 2018 was Php 146.96 per kilogram liveweight. This was lower by 1.35 percent over July 2017's price of Php 148.97 per kilogram. The price had an increasing trend in the succeeding months of 2018 except in November 2018. The price recorded in December 2018 at Php 158.20 per kilogram liveweight was the highest price observed in the past two years.

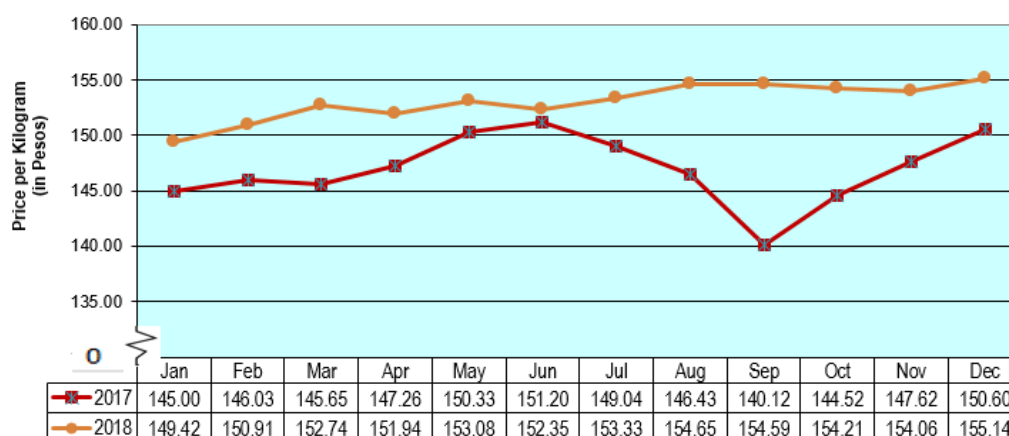
**Figure 5. Farm Price of Chicken Native Improved (Backyard)  
Ilocos Region: 2017 and 2018**



Source: Philippine Statistics Authority- Farm Price Survey (FPS)

The monthly average retail prices of chicken fully dressed in 2<sup>nd</sup> semester 2018 was generally higher monthly average retail prices than 2<sup>nd</sup> semester 2017. The average price during the 2<sup>nd</sup> semester 2018 was Php 154.33 per kilo, higher by 5.42 percent compared to the average of Php 146.39 in same period last year.

**Figure 6. Retail Price of Chicken Fully Dressed  
Ilocos Region: 2017 and 2018**



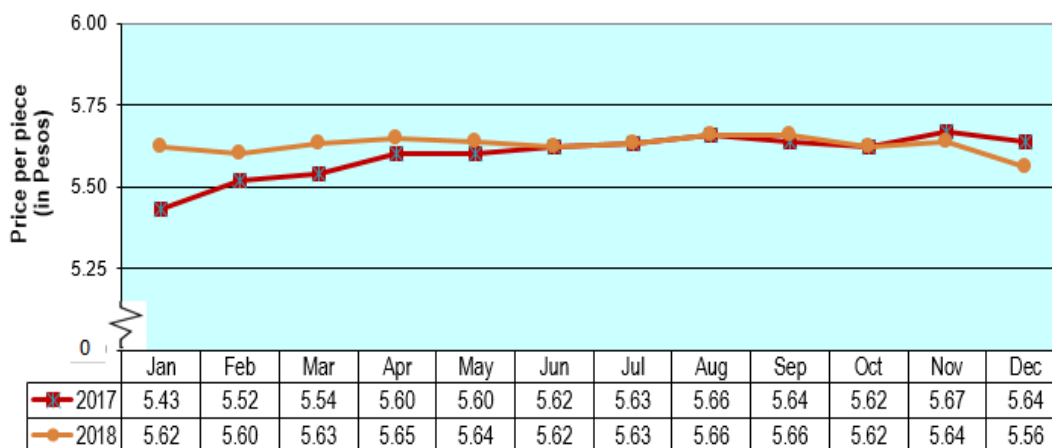
Source: Philippine Statistics Authority- Retail Price Survey (RPS)



Parammata Bldg. C, Diversion Road, Sitio 5, Brgy. Biday, City of San Fernando, La Union  
Telefax: (072) 888-4804 / 607-0247/ 888-2582  
[www.rss01.psa.gov.ph](http://www.rss01.psa.gov.ph)

The average retail prices of chicken egg from July to October 2018 in Ilocos Region were the same as last year's prices in the same period. The price of chicken egg went down to Php 5.64 and Php 5.56 in November and December 2018 respectively.

**Figure 7. Retail Price of Chicken Egg, Other Breed  
Ilocos Region: 2017 and 2018**



Source: Philippine Statistics Authority- Retail Price Survey (RPS)

## TECHNICAL NOTES

The data for this report is collected by the Philippine Statistics Authority (PSA) through two major surveys: namely the BLPS and the CLPS. Surveys are conducted simultaneously every quarter in all provinces of the region.

Another survey that supplements the data requirements of the sub sector is the CDSPDP. This covers the Accredited (AAA, AA) and Locally Registered Meat Establishments (LRMEs) nationwide and is undertaken in coordination with the National Meat Inspection Service (NMIS).

## Concepts and Definitions

- **Production.** Refers to the volume of indigenous (locally-raised) animals disposed for slaughter which include animals exported or shipped-out for slaughter (in “head” and in “liveweight equivalent”).
- **Animal Inventory (also, Animal Population)** – the number of domesticated animals in head, present in the farm at a specific reference date.



- **Poultry** - a collective term for all domesticated avian for the purpose of food consumption or, the carcass of such avian dressed/processed for human consumption.
- **Chicken**- refers to a domestic poultry raised for meat, eggs, by products and other purposes. It is also the most popular poultry species different from turkey, ducks, quails, geese, etc.
- **Backyard Farm/ Raiser**- refers to any farm or household raising at least one head of animal or bird and does not qualify as a commercial farm.
- **Commercial Poultry Farm/ Operator**- refers to any poultry operator or farm which operation satisfies at least one of the following conditions: (a) 500 layers or 1,000 broilers; (b) 100 layers and 100 broilers if raised in combination; and (c) 100 head of duck regardless of age.

  
**ATTY. SHEILA O. DE GUZMAN**  
(Chief Administrative Officer)  
OIC -Regional Director

DET/DAI

