



SPECIAL RELEASE

SWINE SITUATION IN ILOCOS REGION 2022

Date of Release: 09 March 2023

Reference No. 2023-023

PRODUCTION

The total hog production in Ilocos Region decreased to 53,062.33 metric tons liveweight in 2022. This was 7.97 percent lower than the 2021 level. First Semester 2022 production recorded a decrease of 20.08 percent while production in 2nd semester 2022 increased by 5.21 percent.

**Table 1. Volume of Hog Production by Semester, Ilocos Region
2021 and 2022 (in metric ton, liveweight)**

Particulars	2022/P	2021	Percent Change
Annual	53,062.33	57,660.09	-7.97
1st Semester	24,020.61	30,056.29	-20.08
2nd Semester	29,041.72	27,603.80	5.21

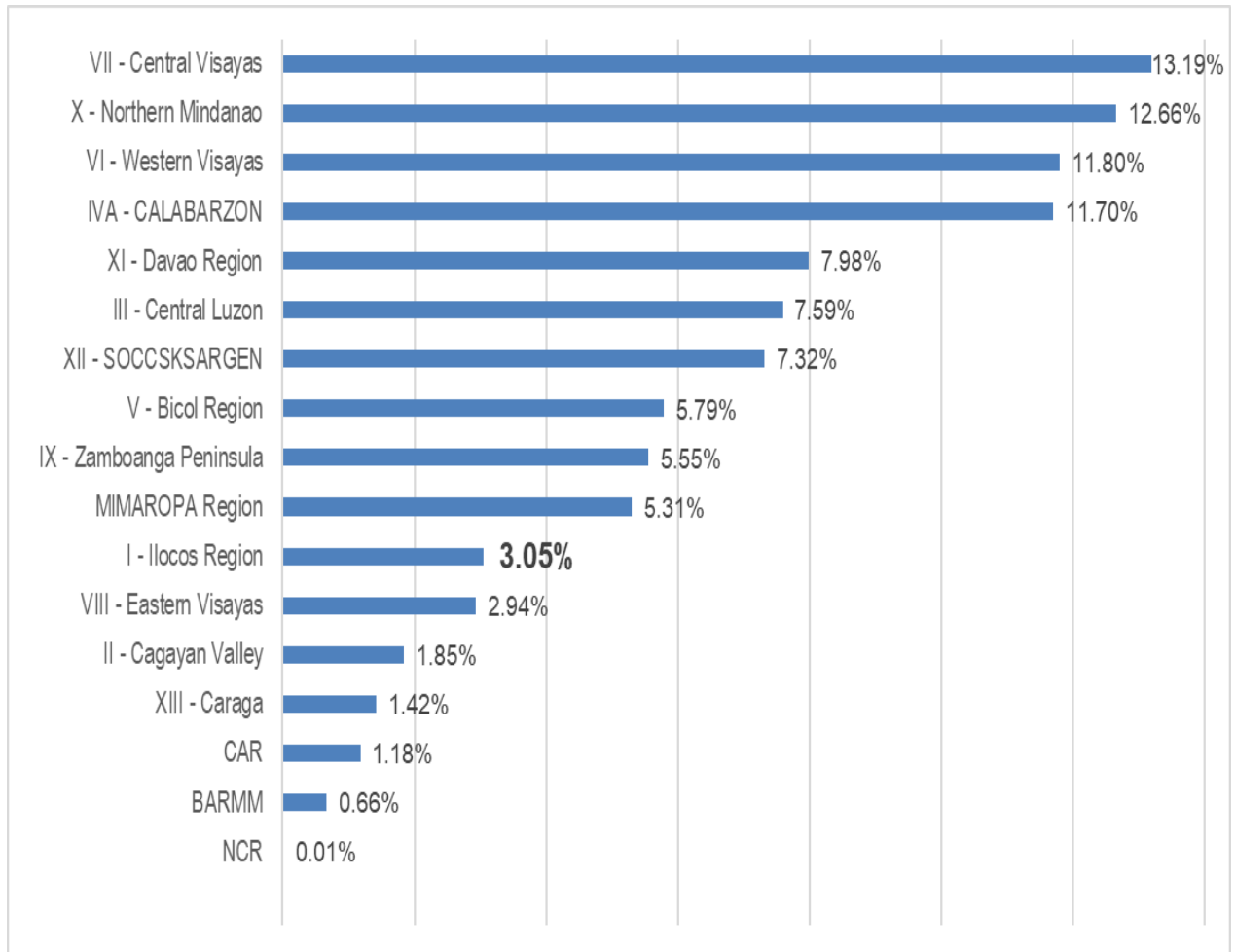
2021/P - Preliminary

Source: Philippine Statistics Authority- Backyard Livestock and Poultry Survey (BLPS), Commercial Livestock and Poultry Survey (CLPS), and Compilation of Data from Slaughterhouses and Poultry Dressing Plants (CDSPDP)

Ilocos Region contributed 3.05 percent to the national production of 1,737.12 thousand metric tons liveweight, ranking 11th among the hog producing regions in the country (Figure 1).



Figure 1. Percent Contribution of Volume of Hog Production by Region, Philippines, 2022



Source: www.psa.gov.ph

INVENTORY

The total headcount of swine in Ilocos Region as of January 1, 2022 was 259,712 heads. It declined by 29.08 percent from the inventory as of January 1, 2021 of 366,229 of heads (Figure 2). Likewise, swine inventory as of April 1, 2022 and July 1, 2022 registered decreases of 23.33 percent and 13.16 percent, respectively, over last year's levels of same reference date. However, an upward trend of headcount in 2022 was noted from April 1 of 255,435 heads to 294, 151 heads as of July 1, reaching 342,051 heads as of October 1.

Figure 2. Inventory of Swine by Reference Date, Ilocos Region 2021 and 2022



Source: PSA - 2022 BLPS and CLPS

By province, decreases in swine population as of January 1, 2022 was noted in Ilocos Norte, Ilocos Sur and Pangasinan by 36.56 percent, 40.36 percent and 22.02 percent, respectively, compared to same reference last year (Table 2). Only La Union posted an increase in inventory as of January 1, 2022 by 4.22 percent. However, an increase of 65.26 percent in the number of hog headcounts in Pangasinan was noted as of October 1, 2022.

**Table 2. Inventory of Swine in Ilocos Region by Province
as of Jan 1 and Jul 1, 2021 and 2022 (in heads)**

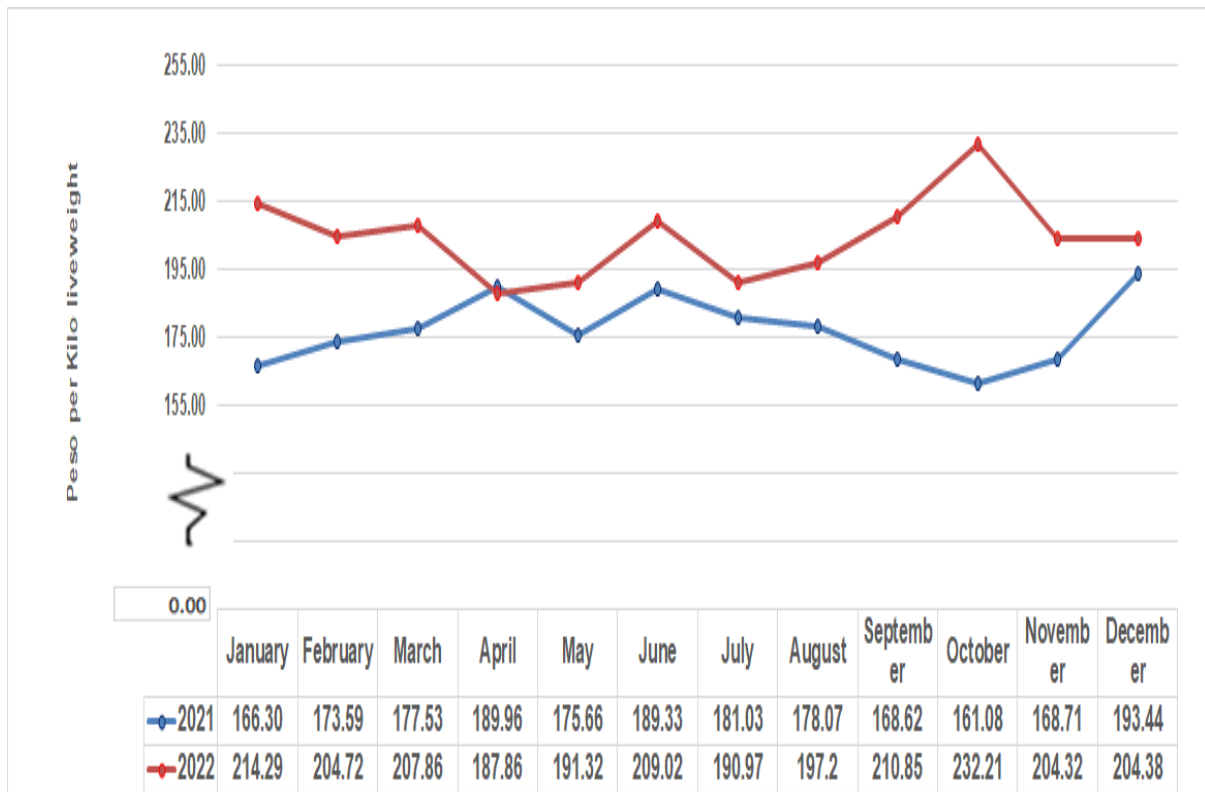
Particulars	2021		2022 P		Percent Change	
	01 Jan	01 Jul	01 Jan	01 Jul	Jan 1, 2022/ 2021	Jul 1, 2022/ 2021
ILOCOS REGION	366,229	338,738	259,712	294,151	-29.08	-13.16
Ilocos Norte	178,409	163,971	113,189	86,108	-36.56	-47.49
Ilocos Sur	67,768	74,180	40,416	56,890	-40.36	-23.31
La Union	47,586	48,367	49,595	64,852	4.22	34.08
Pangasinan	72,466	52,220	56,512	86,301	-22.02	65.26

Source: PSA -2022 BLPS and CLPS

PRICES

The average annual farm price of hog for slaughter in backyard farms in 2022 was PhP 204.58 per kilo liveweight. This was higher by 15.62 percent than the price of PhP 176.94 per kilo liveweight. The monthly average farm prices in 2022 were generally higher than the 2021 price, except the average price of PhP 187.86 per kilo in April 2022 that dropped by 1.11 percent compared to same month in 2021 (Figure 3). The highest price recorded during the period was PhP 232.21 per kilo in October 2022.

Figure 3. Monthly Average Farmgate Price of Hog for Slaughter (Backyard) Ilocos Region: 2021-2022



Source: PSA - 2021 Farm Price Survey (FPS)

TECHNICAL NOTES

The data for this report is collected by the PSA through two (2) major surveys, namely the BLPS and the CLPS. Surveys are conducted simultaneously every quarter in all provinces.

Another survey that supplements the data requirements of the sub-sector is the CDSPDP. This covers the Accredited (AAA, AA) and Locally Registered Meat Establishments (LRMEs) nationwide and is undertaken in coordination with the NMIS and PVO of the four provinces.

Concepts and Definitions

- **Volume of Production** - Refers to the number of tended/raised animals disposed for slaughter including animals shipped out for slaughter. This is expressed in metric tons, liveweight.
- **Animal Inventory** (*also, Animal Population*) – the number of domesticated animals in head present in the farm at specific reference date.
- **Swine** -a domesticated animal characterized by a stout body, short legs with a long mobile snout. This is also known as pig.
- **Farmprice** – the price received by raisers for their produce at the location of farm. Thus, marketing costs such as transport and other marketing cost (if any) incurred in selling the produce are not included in the farmgate prices


ATTY. SHEILA O. DE GUZMAN
Regional Director


JYY/TBO/DAI

