



# SPECIAL RELEASE

**Caba, La Union's population increases at a rate of 1.01 percent  
(2020 Census of Population and Housing)**

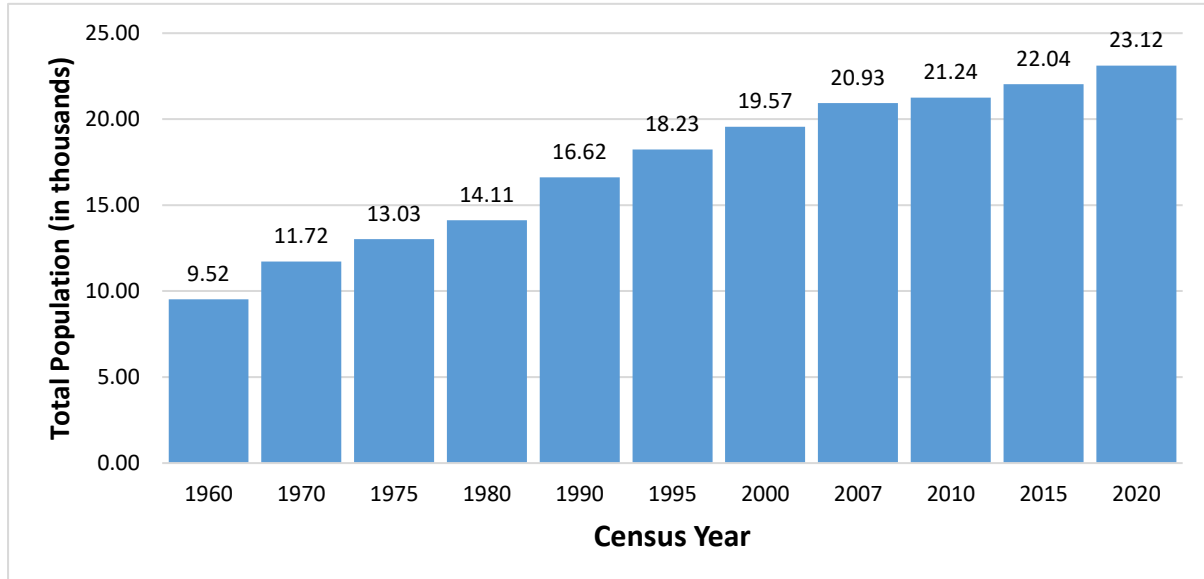
Date of Release: **31 October 2024**

Reference No. 2024-66

## Total Population increases at a rate of 1.01 percent annually

Based on the 2020 Census of Population and Housing (2020 CPH), the municipality of Caba, La Union recorded a total population of 23,119 persons as of 01 May 2020. This translates to an increase of 1,080 persons compared with the total population of 22,039 persons in the 2015 Census of Population (POPCEN). (Figure 1)

**Figure 1. Total Population by Censal Year, Caba, La Union: 1960 to 2020**



Source: Philippine Statistics Authority

## Population increases by 10 persons per year for every 1,000 persons

The increase in the population count of the municipality of Caba, La Union from 2015 to 2020 translated to an average annual population growth rate (PGR) of 1.01 percent, which means that about 10 persons were added per year for every 1,000 persons in the population. (Figure 2)

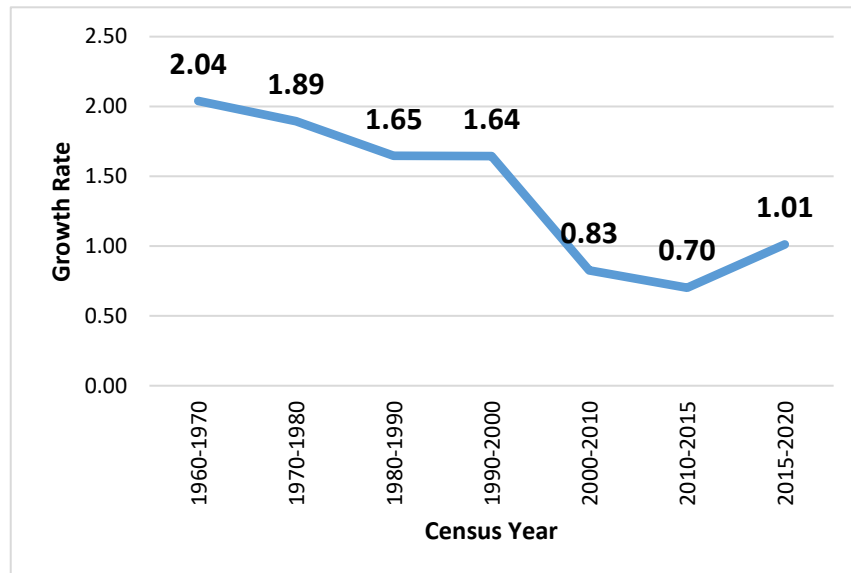
The annual PGR was lower at 0.70 percent during the period 2010 to 2015 and at 0.83 percent during the period 2000 to 2010.



If the average annual PGR recorded at 1.01 percent during the period 2015 to 2020 continues, the population of Caba, La Union would double in 69 years.

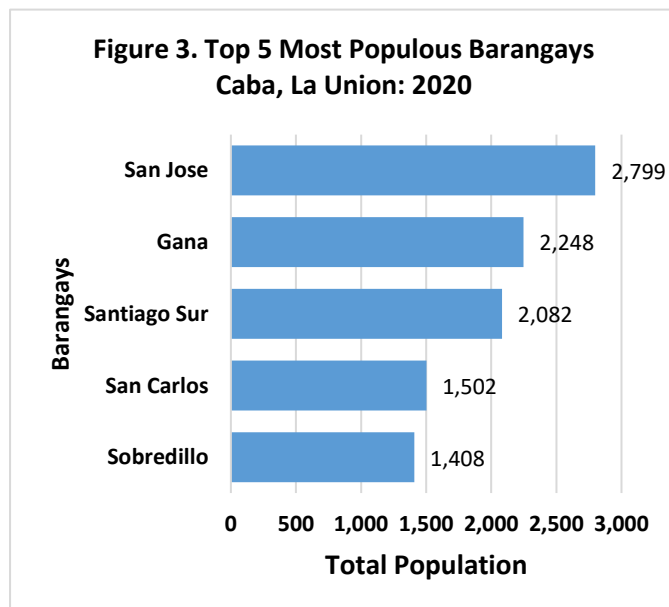
Sixty years ago, the population of Caba, La Union was only 9,517 persons. This population size is more than two-fifths of the population of the municipality in 2020 CPH.

**Figure 2. Intercensal Population Growth Rate, Caba, La Union: 1960 to 2020**



Source: Philippine Statistics Authority

**San Jose remains the most populous barangay in 2020 in the Municipality**



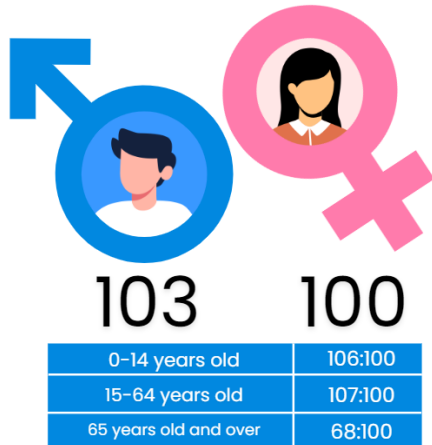
Among the 17 barangays in Caba, La Union, San Jose was the most populous with a population size making up 12.11 percent of the total municipal population. Barangay Gana was second with a 9.72 percent share, followed by Santiago Sur with a 9.01 percent share, San Carlos with a 6.50 percent share, and Sobredillo with a 6.09 percent share.

The least populated barangay was Wenceslao with a 2.01 percent share to the total population of the municipality. It was also the least populated barangay in the municipality in 2015.

Source: Philippine Statistics Authority, 2020 Census of Population and Housing



**Figure 4. Sex Ratio  
Caba, La Union: 2020**



**Sex ratio declines to 103 males per 100 females**

Of the 23,093 household population in 2020, males accounted for 50.75 percent while females comprised 49.25 percent. These figures resulted to a sex ratio of 103 males for every 100 females, a decrease in a sex ratio from 105 males for every 100 females recorded in 2015. (Figure 4)

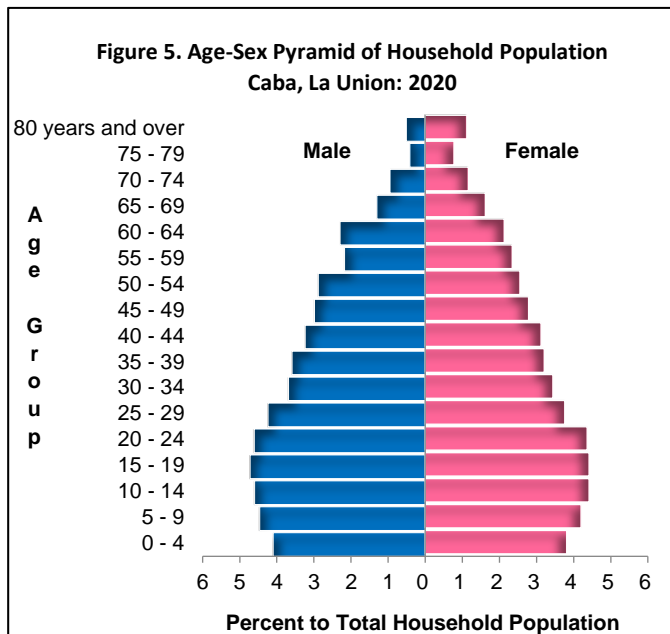
Children aged below 15 years had a sex ratio of 106 males per 100 females, while those aged 15 to 64 had a sex ratio of 107 males per 100 females. On the other hand, among those aged 65 years and over, the sex ratio was 62 males per 100 females. (Figure 4).

Source: Philippine Statistics Authority, 2020 Census of Population and Housing

**Median age increases to 28.94 years**

During the 2020 CPH, the median age of the household population in the municipality was 28.94 years, meaning that half of the population was younger than 28.94 years. This was higher than the median age of 27.75 years recorded in 2015.

In 2020, the largest age group was children aged 15 to 19, making up 9.14 percent of the total population. This was followed by those aged 10 to 14, at 9.02 percent, and those aged 20 to 24, at 8.98 percent. Males outnumbered females in the age groups from 0 to 54 and 60 to 64. Conversely, there were more females than males in the older age groups of 55 to 59 and 65 years and over.



Source: Philippine Statistics Authority, 2020 Census of Population and Housing

**More than two-thirds of the household population are of voting age**

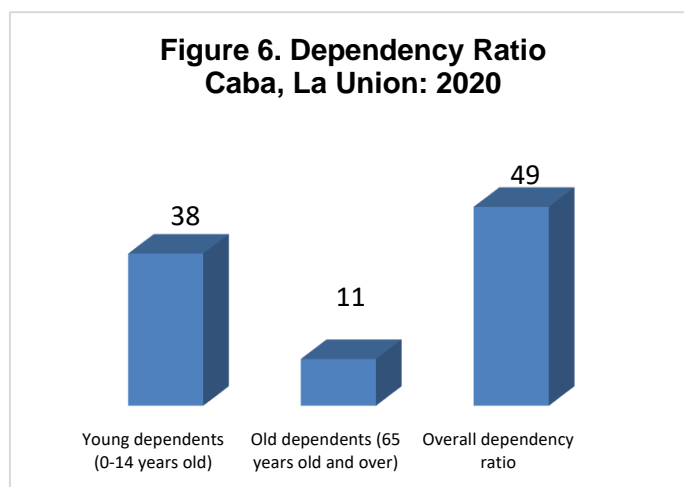
The voting-age population (18 years and over) accounted for 68.84 percent of the total household population of the municipality in 2020. There were more males (50.40%) than females (49.60%) among the voting-age population.

**Dependency ratio decreases to 54 dependents per 100 persons in the working age group**

In 2020, the young dependents (0 to 14 years) makes up 25.58 percent of the household population while the old dependents (65 years and over) recorded a 7.86 percent share. The working-age population (15 to 64 years) accounted for the remaining 66.56 percent.



The overall dependency ratio was 49, which indicates that for every 100 working-age population, there were about 49 dependents (38 young dependents and 11 old dependents). This ratio is lower with the dependency ratio in 2015, which was recorded at 54 dependents per 100 working-age population.



Source: Philippine Statistics Authority, 2020 Census of Population and Housing

### **Males dominate females among the never-married persons**

Of the total household population aged 10 years old and over, 7,231 persons, or 37.53 percent were never-married, while 8,002 persons, or 41.53 percent were married. The rest of the population was categorized as follows: widowed (5.89%), divorced/separated (2.17%), common-law/live-in (12.86%), and unknown (0.02%).

Among the never-married persons, 55.51 percent were males while 44.49 percent were females.

### **More females than males attained higher levels of education**

Of the household population five years old and over, 24.59 percent had attended or completed elementary education while 45.09 percent had reached or finished high school. Moreover, 9.38 percent were college undergraduates and 15.10 percent were academic degree holders.

Among those with an academic degree, females (56.28%) outnumbered the males (43.72%). Similarly, more females (71.83%) than males (28.17%) had pursued post-baccalaureate courses.

### **Literacy rate is recorded at 98.97 percent**

The Municipality of Caba, La Union posted a literacy rate of 98.97 percent among the 21,267 household population aged 5 years and over. The literacy rate was slightly higher among males (50.69 %) than among females (49.31%).

### **Average household size is 3.9 persons**

The household population of Caba, La Union in 2020 was 23,093 persons, higher by 1,128 persons from the household population of 21,965 persons in 2015.



In 2020, the number of households was 5,923, higher by 696 households compared with the 5,227 households recorded in 2015. The average household size in 2020 was 3.9 people, lower than the average household size of 4.2 people in 2015.

**Table 1. Household Population, Number of Households, and Average Household Size  
Caba, La Union: 2015 and 2020**

Census Year	Household Population	Number of Households	Average Household Size
2020	23,093	5,923	3.9
2015	21,965	5,227	4.2

Sources: Philippine Statistics Authority, 2020 Census of Population and Housing and 2015 Census of Population

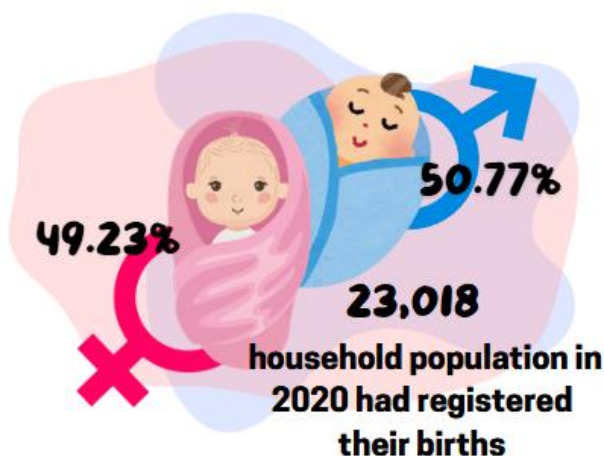
### Proportion of persons with registered births in Caba, La Union is 99.68 percent

The 2020 CPH revealed that 23,018 persons had their births registered at the Local Civil Registry Office (LCRO). This is equivalent to 99.68 percent of the 23,093 household population in 2020.

### More males than females have registered births

Among the 23,018 household population whose births were registered at the LCRO, 11,686 persons (50.77 percent) were males, while 11,332 persons (49.23 percent) were females. This translates to a sex ratio of 103 males whose births were registered at the LCRO for every 100 females whose births were also registered. (Figure 7)

**Figure 7. Percent Distribution of the Household Population with Registered Births by Sex, Caba, La Union: 2020**



Source: Philippine Statistics Authority, 2020 Census of Population and Housing



## TECHNICAL NOTES

<i>Population growth rate</i>	the rate at which the population is increasing (or decreasing) in a given period due to natural increase and net migration, expressed as a percentage of the base population
<i>Total population</i>	the sum of the household population and institutional population. It also includes Filipinos in Philippine embassies, consulates, and missions abroad
<i>Household population</i>	comprises of persons who belong to a household, the basic criterion of which is the usual place of residence or the place where the person usually resides
<i>Household</i>	a social unit consisting of a person living alone or a group of persons who sleep in the same housing unit and have a common arrangement in the preparation and consumption of food
<i>Average household size</i>	the average number of persons who live in the household, computed as the household population in a given area divided by the corresponding total number of households in that area
<i>Head of the household</i>	an adult person, male or female, who is responsible for the organization and care of the household, or who is regarded as such by the members of the household
<i>Sex ratio</i>	the ratio of males to females in a given population, expressed as the number of males per 100 females
<i>Age</i>	the interval of time between a person's date of birth and the census reference date (1 August 2015). Expressed in completed years (as of last birthday), it is recorded in whole number
<i>Median age</i>	the age at which exactly half of the population is younger than this age and the other half is older than it
<i>Overall dependency ratio</i>	the ratio of persons in the dependent ages (under 15 years old and over 64 years old) to persons in the economically active or working ages (15 to 64 years old) in the population
<i>Marital status</i>	the personal status of each individual with reference to the marriage laws or customs of the country
<i>Simple literacy rate</i>	the proportion of persons aged 10 years and over who are able to read and write a simple message in any language or dialect
<i>Highest grade/year completed</i>	the highest grade or year completed in school, college or university



## EXPLANATORY NOTES

The total population presented in this release is based on the 2020 CPH. The population count is declared official for all purposes by the President of the Philippines, pursuant to Proclamation No. 1179 dated 06 July 2021. The total population represents the total number of persons living as of 12:01 AM on 01 May 2020 in the country. It also includes Filipinos in Philippine embassies, consulates, and missions abroad.



**DANITES E. TEÑIDO, PhD**  
Chief Statistical Specialist



KJGH/CAE

