

# SPECIAL RELEASE

## Bagulin, La Union's population grows at a rate of 1.48 percent (2020 Census of Population and Housing)

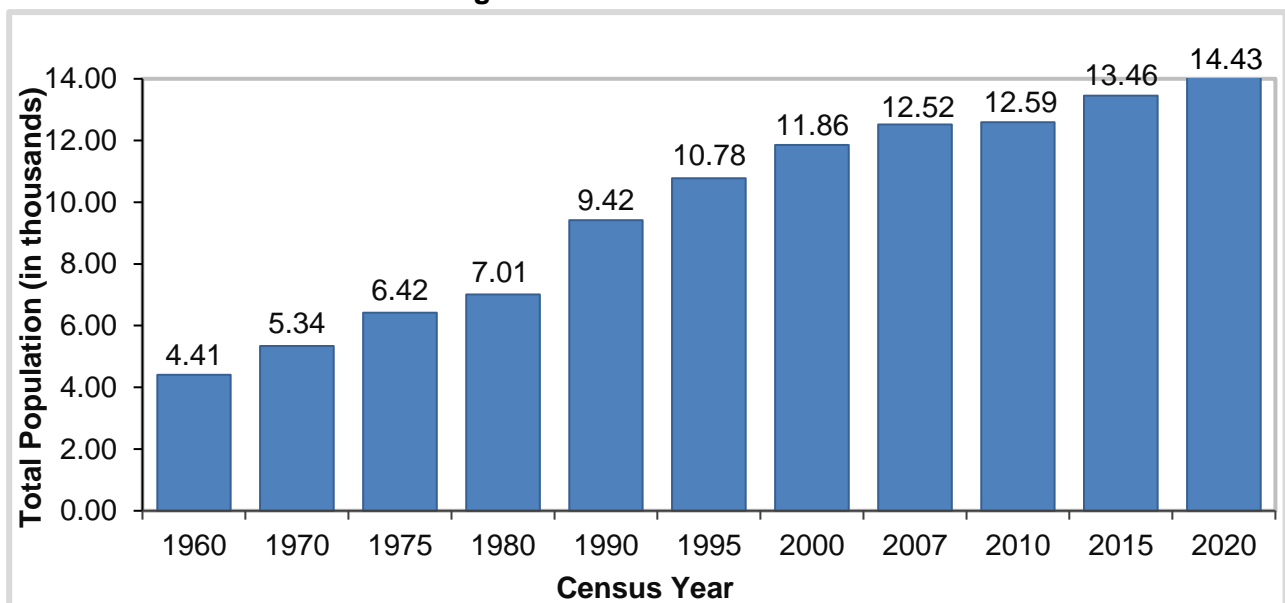
Date of Release: **31 October 2024**

Reference No. 2024-61

### Total Population increases by 1.48 percent annually

Based on the 2020 Census of Population and Housing (2020 CPH), the municipality of Bagulin, La Union posted a total population of 14, 428 persons as of 01 May 2020. This translates to an increase of 972 individuals over the 13,456 total population in the 2015 Census of Population (POPCEN). (Figure 1)

**Figure 1. Total Population by Censal Year  
Bagulin La Union: 1960 to 2020**



Source: Philippine Statistics Authority

### Population increases by 15 persons per year for every 1,000 persons

The increase in the population count of the municipality of Bagulin, La Union from 2015 to 2020 translated to an average annual population growth rate (PGR) of 1.48 percent. This means that there were about 15 persons added per year for every 1,000 persons in the population. (Figure 2)

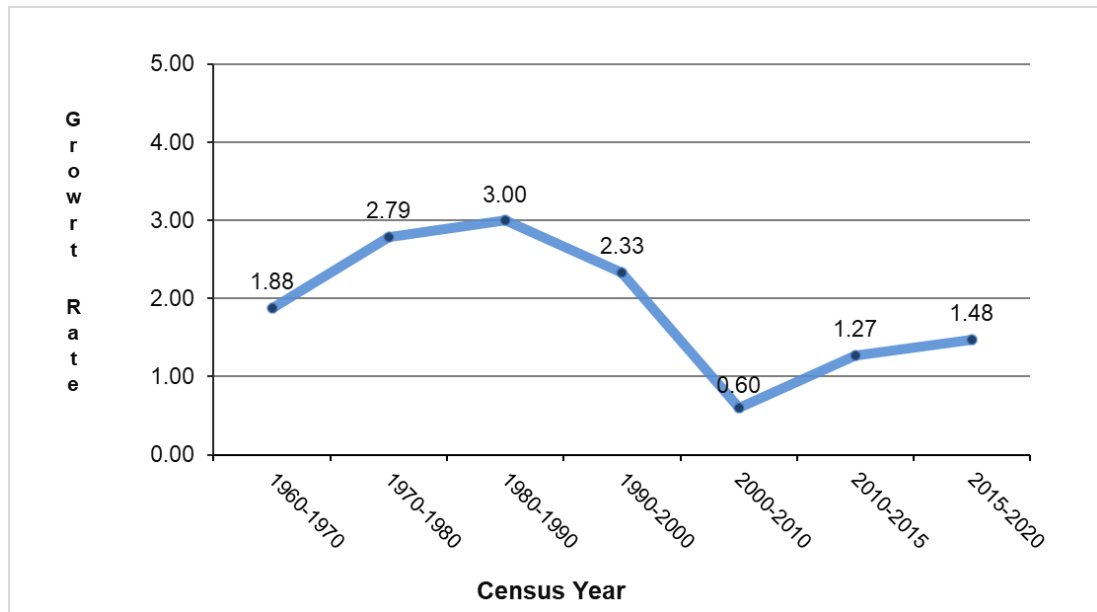
The annual PGR was lower at 1.27 percent during the period 2010 to 2015 and at 0.60 percent during the period 2000 to 2010.

If the average annual PGR recorded at 1.48 percent from 2015 to 2020 continues, the population of Bagulin, La Union, will double in 47 years.



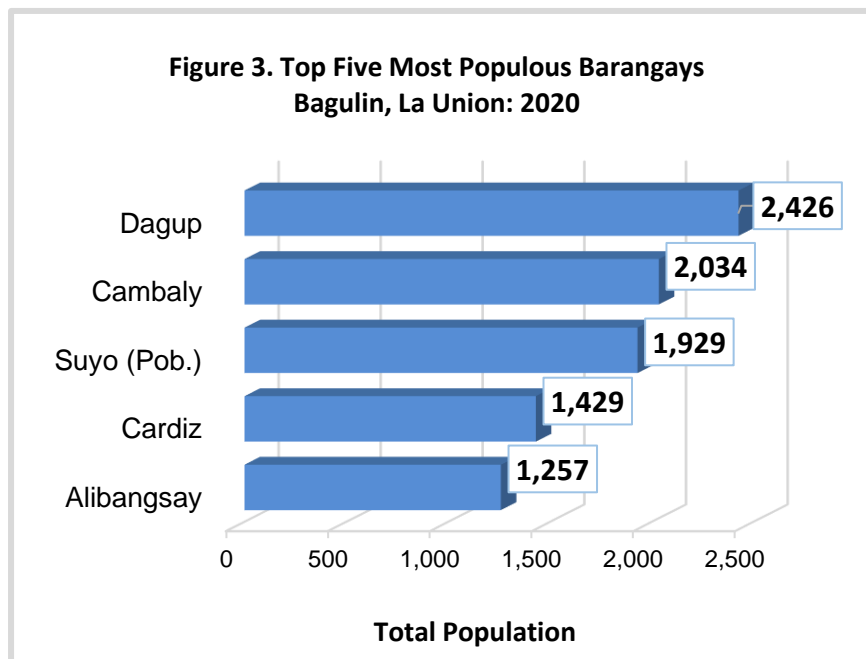
Sixty years ago, the population of Bagulin, La Union was only 4,407 persons. This population size is less than one-third of the population of the municipality in 2020 CPH.

**Figure 2. Intercensal Population Growth Rate  
Bagulin, La Union: 1960 to 2020**



Source: Philippine Statistics Authority

### Dagup remains as the most populous in 2020



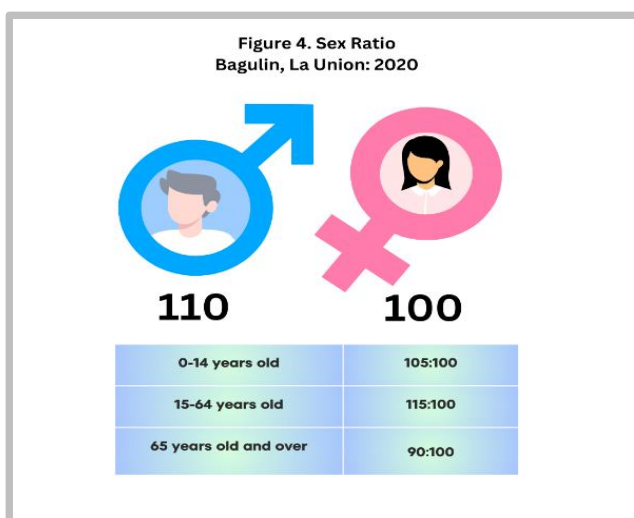
Source: Philippine Statistics Authority, 2020 Census of Population and Housing

Among the 10 barangays of the municipality of Bagulin, La Union, Dagup was the most populous with a population size making up 16.81 percent of the total municipal population. Barangay Cambaly was second with a 14.10 percent share, followed by Suyo (Pob) with 13.37 percent, Cardiz with 9.90 percent, and Alibangsay with 8.71 percent.

The least populated barangay was Libbo with a 6.64 percent share of the total population of the municipality. It was also the least populated barangay in 2015.



## Sex ratio decreases to 110 males per 100 females



Source: Philippine Statistics Authority, 2020 Census of Population and Housing

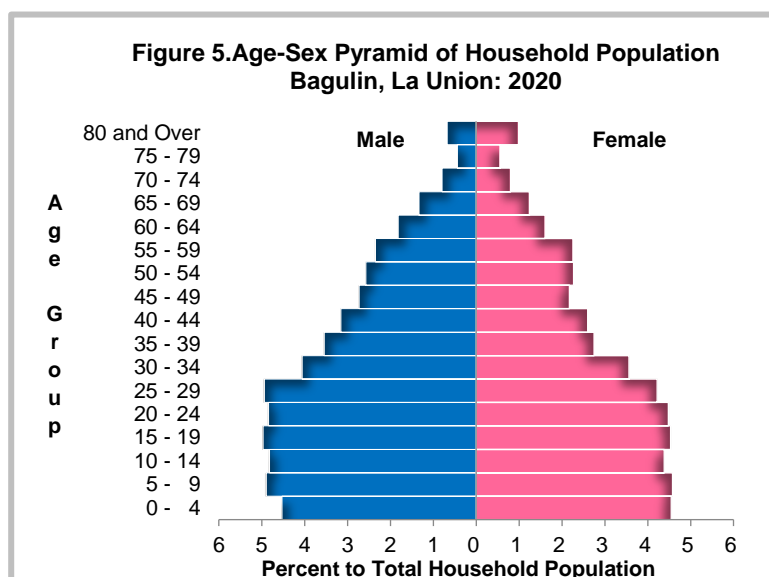
Of the 14,425 household population of the municipality of Bagulin in 2020, males accounted for 52.44 percent while females comprised 47.56 percent. These figures resulted to a sex ratio of 110 males for every 100 females, a decrease in sex ratio from 112 males for every 100 females recorded in 2015.

Children aged below 15 years had a sex ratio of 105 males per 100 females, while those aged 15 to 64 had a sex ratio of 115 males per 100 females. On the other hand, among those aged 65 years and over, the sex ratio was 90 males per 100 females. (Figure 4)

## Median age increases to 27 years

In 2020, the median age of the household population of the municipality was 27 years, which means that half of the population was younger than 27 years. This was higher than the median age of 25 years recorded in 2015.

Children aged 15 to 19 years (9.5%) comprised the largest age group, followed by those in the age groups 5 to 9 years (9.47%) and 20 to 24 years (9.32%). Males outnumbered females in the age group 5 to 69 years. On the other hand, there were more females than males in the older age groups (70 years and over).



Source: Philippine Statistics Authority, 2020 Census of Population and Housing

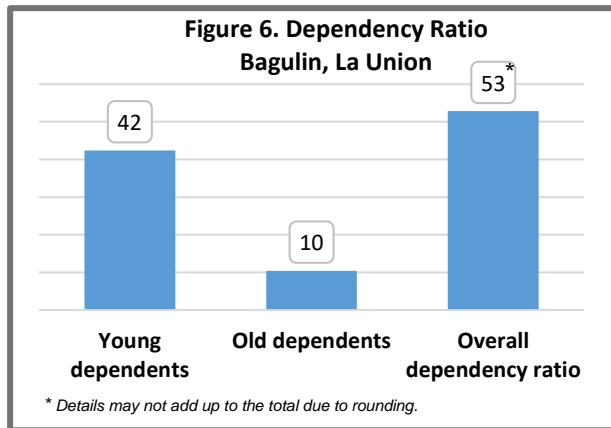
## More than two-thirds of the household population are of voting age

The voting-age population (18 years and over) accounted for 66.41 percent of the household population of the municipality in 2020, up from 63.87 percent in 2015. There were more males (52.83%) than males (47.17%) among the voting-age population.

## Dependency ratio decreases to 53 dependents per 100 persons in the working age group

In 2020, the young dependents (0 to 14 years) comprised 27.74 percent of the household population while the old dependents (65 years and over) posted a share of 6.83 percent. The working-age population (15 to 64 years) accounted for 65.43 percent.





Source: Philippine Statistics Authority, 2020 Census of Population and Housing

The overall dependency ratio was 53, which indicates that for every 100 working-age population, there were about 53 dependents (42 young dependents and 10 old dependents). This ratio is lower than the dependency ratio in 2015, which was recorded at 58 dependents per 100 working-age population.

### Males dominate females among the never-married persons

Of the household population 10 years old and over, 47.56 percent were married while 40.55 percent were never married. The rest of the population was categorized as follows: common-law/live-in marital arrangement (5.61%), widowed (4.64%), and divorced/separated (1.64 %).

Among the never-married persons, 58.36 percent were males while 41.64 percent were females.

### More females than males attained higher levels of education

Of the household population five years old and over, 34.59 percent had attended or completed elementary education while 42.40 percent had reached or finished high school. Moreover, 5.22 percent were college undergraduates and 9.69 percent were academic degree holders.

Among those with an academic degree, females (65.15%) outnumbered males (34.85%). Similarly, more females (84.62 percent) than males (15.38 percent) had pursued post baccalaureate courses.

### Literacy rate is recorded at 96.97 percent

Bagulin, La Union posted a literacy rate of 96.97 percent among the 13,116 household population aged five years and over. The literacy rate was higher among males (52.87 %) than females (47.13%).

### Average household size is 4.3 persons

The household population of the municipality of Bagulin, La Union in 2020 was 14,425 persons, higher by 1,005 persons from the household population of 13, 420 persons in 2015.

The number of households in 2020 was recorded at 3,341, higher by 363 households compared with the 2,978 households posted in 2015. The average household size in 2020 was 4.3 persons, lower than the average household size of 4.5 persons in 2015.

**Table 1. Household Population, Number of Households, and Average Household Size  
Bagulin, La Union: 2015 and 2020**

Census Year	Household Population	Number of Households	Average Household Size
2020	14,425	3,341	4.3
2015	13,420	2,978	4.5

Sources: Philippine Statistics Authority, 2020 Census of Population and Housing and 2015 Census of Population

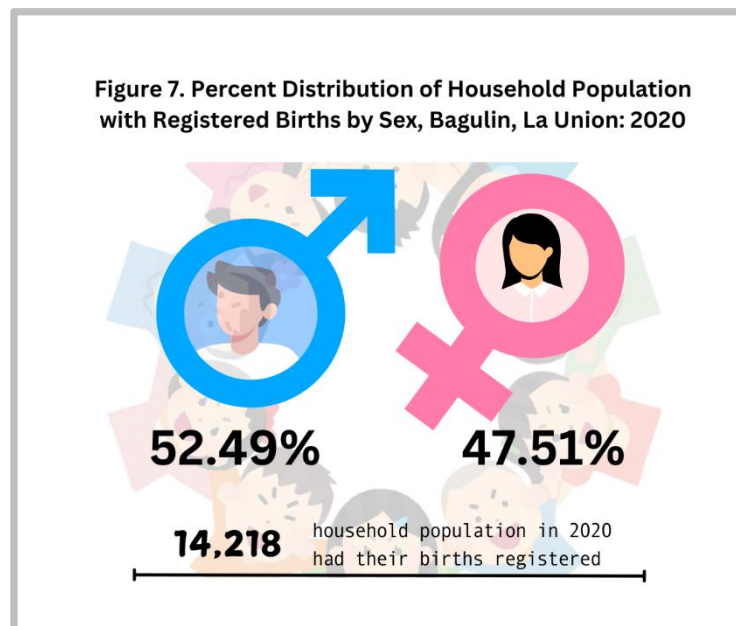


## Proportion of persons with registered births in Bagulin, La Union is 98.56 percent

The 2020 CPH revealed that a total of 14,218 persons had their births registered at the Local Civil Registry Office (LCRO). This is equivalent to 98.56 percent of the 14,425 household population in 2020.

## More males than females have registered births

Among the 14,218 household population whose births were registered at the LCRO, 52.49 percent (7,463 persons) were males, while 47.51 percent (6,755 persons) were females. This translates to a sex ratio of 110 males registered at the LCRO for every 100 females whose births were also registered. (Figure 7)



Source: Philippine Statistics Authority, 2020 Census of Population and Housing



## TECHNICAL NOTES

<i>Population growth rate</i>	the rate at which the population is increasing (or decreasing) in a given period due to natural increase and net migration, expressed as a percentage of the base population
<i>Total population</i>	the sum of the household population and institutional population. It also includes Filipinos in Philippine embassies, consulates, and missions abroad
<i>Household population</i>	comprises of persons who belong to a household, the basic criterion of which is the usual place of residence or the place where the person usually resides
<i>Household</i>	a social unit consisting of a person living alone or a group of persons who sleep in the same housing unit and have a common arrangement in the preparation and consumption of food
<i>Average household size</i>	the average number of persons who live in the household, computed as the household population in a given area divided by the corresponding total number of households in that area
<i>Head of the household</i>	an adult person, male or female, who is responsible for the organization and care of the household, or who is regarded as such by the members of the household
<i>Sex ratio</i>	the ratio of males to females in a given population, expressed as the number of males per 100 females
<i>Age</i>	the interval of time between a person's date of birth and the census reference date (1 August 2015). Expressed in completed years (as of last birthday), it is recorded in whole number
<i>Median age</i>	the age at which exactly half of the population is younger than this age and the other half is older than it
<i>Overall dependency ratio</i>	the ratio of persons in the dependent ages (under 15 years old and over 64 years old) to persons in the economically active or working ages (15 to 64 years old) in the population
<i>Marital status</i>	the personal status of each individual with reference to the marriage laws or customs of the country
<i>Simple literacy rate</i>	the proportion of persons aged 10 years and over who are able to read and write a simple message in any language or dialect
<i>Highest grade/year completed</i>	the highest grade or year completed in school, college or university



## EXPLANATORY NOTES

The total population presented in this release is based on the 2020 CPH. The population count is declared official for all purposes by the President of the Philippines, pursuant to Proclamation No. 1179 dated 06 July 2021. The total population represents the total number of persons living as of 12:01 AM on 01 May 2020 in the country. It also includes Filipinos in Philippine embassies, consulates, and missions abroad.

  
**DANITES E. TEÑIDO, PhD**  
Chief Statistical Specialist

*kjgh/mbi*

