



SPECIAL RELEASE

**Aringay, La Union's population increases at a rate of 1.26 percent
(2020 Census of Population and Housing)**

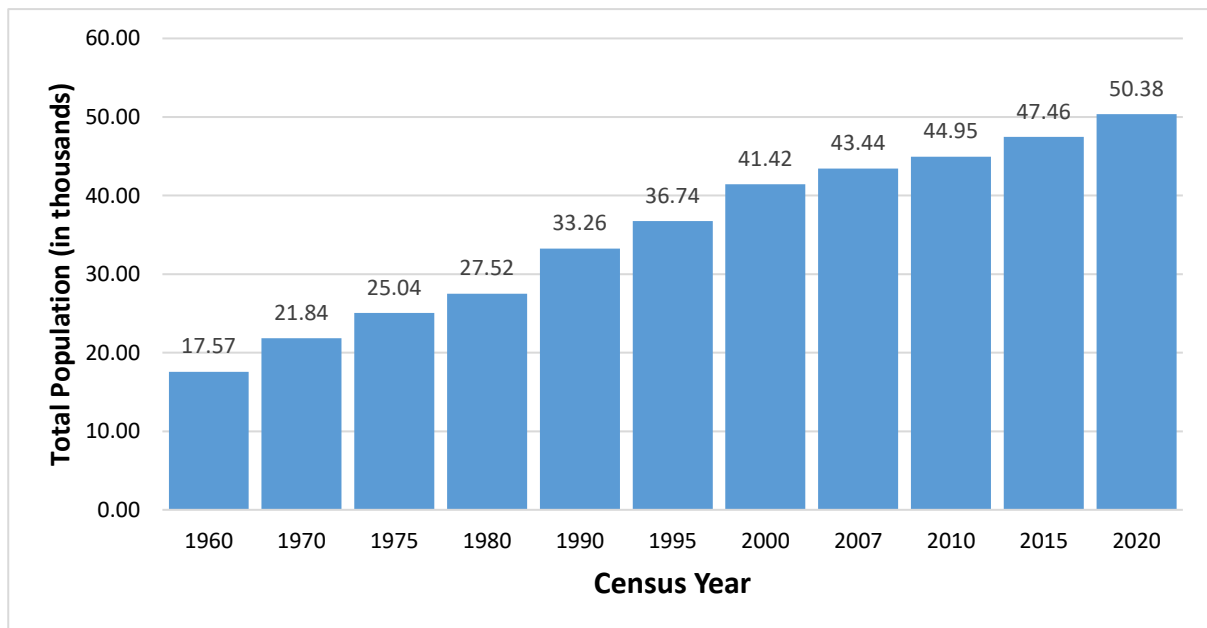
Date of Release: **31 October 2024**

Reference No. 2024-59

Total Population increases at a rate of 1.26 percent annually

Based on the 2020 Census of Population and Housing (2020 CPH), the municipality of Aringay, La Union recorded a total population of 50,380 persons as of 01 May 2020. This showed an increase of 2,922 persons compared with the total population of 47,458 persons in the 2015 Census of Population (POPCEN). (Figure 1)

Figure 1. Total Population by Censal Year, Aringay, La Union: 1960 to 2020



Source: Philippine Statistics Authority

Population increases by 13 persons per year for every 1,000 persons

The increase in the population count of the municipality of Aringay, La Union from 2015 to 2020 translated to an average annual population growth rate (PGR) of 1.26 percent. This means that about 13 persons were added per year for every 1,000 persons in the population. (Figure 2)

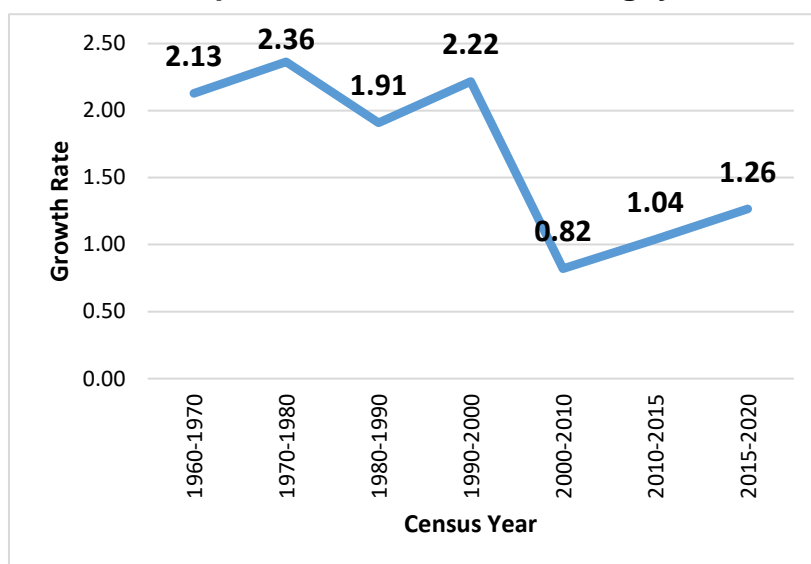


The annual PGR was lower at 1.04 percent during the period 2010 to 2015 and at 0.82 percent during the period 2000 to 2010.

If the average annual PGR recorded at 1.26 percent during the period 2015 to 2020 continues, the population of Aringay, La Union would double in 55 years.

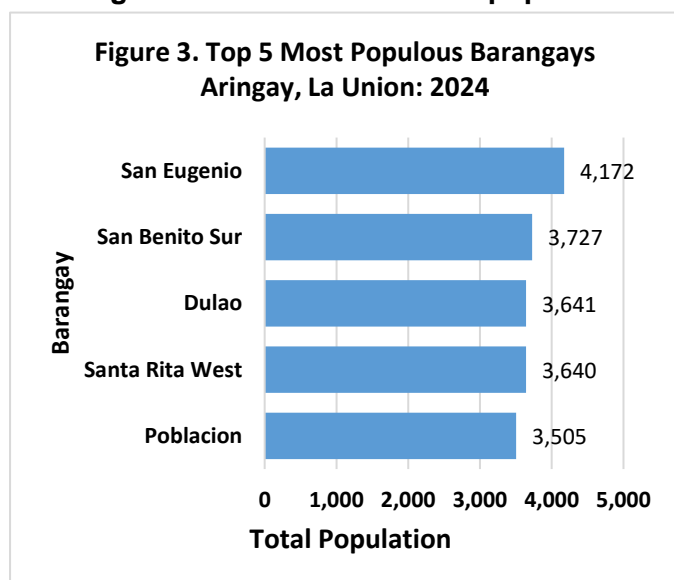
Sixty years ago, the population of Aringay, La Union was only 17,572 persons. This population size is more than one-third of the population of the municipality in the 2020 CPH.

Figure 2. Intercensal Population Growth Rate, Aringay, La Union: 1960 to 2020



Source: Philippine Statistics Authority

San Eugenio remains as the most populous barangay in 2020 in the Municipality



Among the 24 barangays of Aringay, La Union, San Eugenio was the most populous with a population size making up 8.28 percent of the total municipal population. Barangay San Benito Sur was second with a 7.40 percent share, followed by Dulao with a 7.23 percent share, Santa Rita West with a 7.23 percent share, and Poblacion with a 6.96 percent share.

The least populated barangay was San Juan East with 1.99 percent share to the total population of the municipality. It was also the least populated barangay in the municipality in 2015.

Source: Philippine Statistics Authority, 2020 Census of Population and Housing



Urban population in Aringay, La Union increases by 1.74 thousand

In 2020, 9,070 or 18.00 percent of the total 50,380 population of Aringay, La Union lived in urban barangays. This represents an increase of 1,738 persons from the 7,332 urban residents in 2015. The rural population or those who lived in barangays classified as rural in 2020 comprised the remaining 41,310 persons or 82.00 percent of the total population. (Table 1)

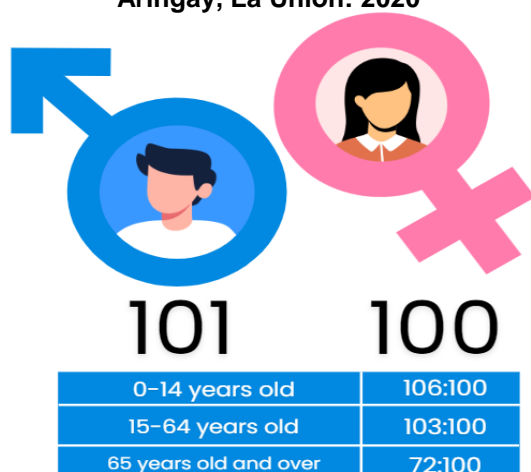
Table 1. Total Population, Urban Population, and Level of Urbanization
Aringay, La Union: 2015 and 2020

Municipality	Total Population		Urban Population		Level of Urbanization (Percent)	
	2020	2015	2020	2015	2020	2015
ARINGAY	50,380	47,458	9,070	7,332	18.00	15.40

Sources: Philippine Statistics Authority, 2020 Census of Population and Housing and 2015 Census of Population

Sex ratio declines to 101 males per 100 females

Figure 4. Sex Ratio
Aringay, La Union: 2020



Source: Philippine Statistics Authority, 2020 Census of Population and Housing

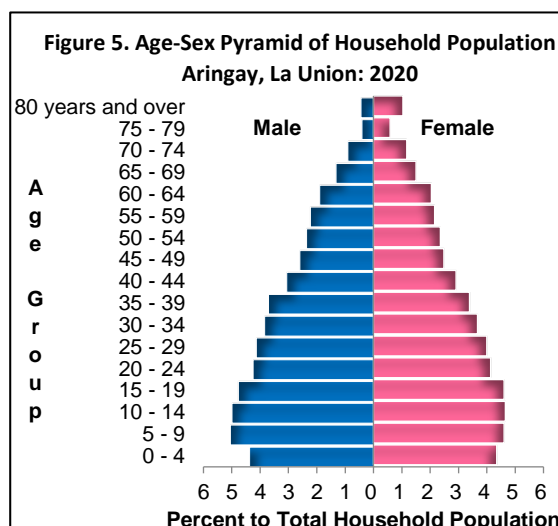
Of the 50,379 household population in 2020, males accounted for 50.31 percent while females comprised 49.69 percent. These figures resulted to a sex ratio of 101 males for every 100 females, a decrease in a sex ratio from 105 males for every 100 females recorded in 2015. (Figure 4)

Children aged below 15 years had a sex ratio of 106 males per 100 females, while those aged 15 to 64 had a sex ratio of 103 males per 100 females. On the other hand, among those aged 65 years and over, the sex ratio was 72 males per 100 females. (Figure 4).

Median age increases to 27.60 years

In 2020, the median age of the household population in the municipality was 27.60 years, which means that half of the population was younger than 27.60 years. This is higher than the median age of 26.18 years recorded in 2015.

In 2020, the largest age group was children aged 5 to 9, with a population size making up 9.65 percent of the total population. This was followed by aged 10 to 14, at 9.64 percent, and aged 15 to 19, at 9.37 percent. Males



Source: Philippine Statistics Authority, 2020 Census of Population and Housing

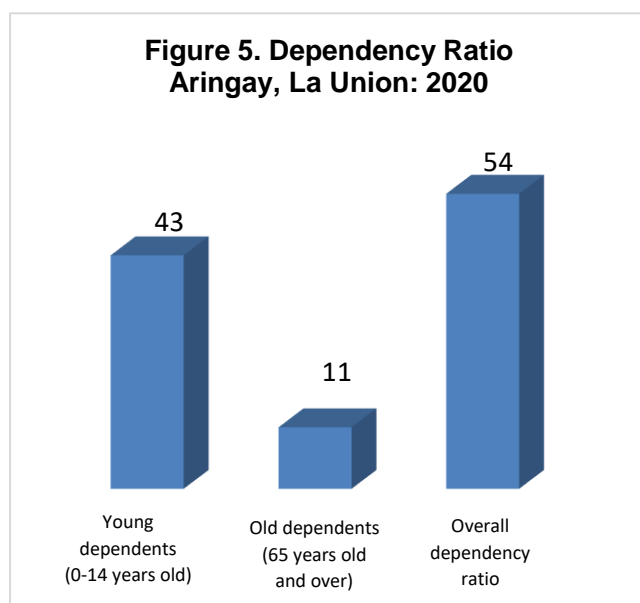


outnumbered females in the age group 0 to 59. There were more females than males in the older age group of 60 years and above.

More than three-fifths of the household population are of voting age

The voting-age population (18 years and over) accounted for approximately 66.34 percent of the total household population of the municipality in 2020. There were more females (50.25 percent) than males (49.75 percent) among the voting-age population.

Dependency ratio decreases to 54 dependents per 100 persons in the working age group



In 2020, the young dependents (0 to 14 years) made up 28.01 percent of the household population while the old dependents (65 years and over) recorded a 7.38 percent share. The working age population (15 to 64 years) accounted for the remaining 64.61 percent.

The overall dependency ratio was 54, which indicates that for every 100 working-age population, there were about 54 dependents (43 young dependents and 11 old dependents). This ratio is lower than the dependency ratio in 2015, which was recorded at 57 dependents per 100 working-age.

Source: Philippine Statistics Authority, 2020 Census of Population and Housing

Males dominate females among the never-married persons

Of the total household population aged 10 years old and over, 15,491 persons, or 37.67 percent were never married, while 17,476 persons or 42.49 percent were married. The rest of the population was categorized as follows: widowed (5.30%), divorced/separated (1.81%), common-law/live-in (12.71%), and unknown (0.01%).

Among the never-married persons, 54.39 percent were males while 45.61 percent were females.

More females than males attained higher levels of education

Of the total household population five years old and over, 28.96 percent had attended or completed elementary education while 41.68 percent had reached or finished high school. Moreover, 8.16 percent were college undergraduates and 13.04 percent were academic degree holders.

Among those with an academic degree, females (57.79%) outnumbered the males (42.21%). Similarly, more females (65.38%) than males (34.62%) had pursued post-baccalaureate courses.



Literacy rate is recorded at 98.98 percent

The Municipality of Aringay, La Union posted a literacy rate of 98.98 percent among the 45,989 household population aged 5 years and over. The literacy rate was slightly higher among males (50.34%) than among females (49.66%).

Average household size is 4.0 persons

The household population of Aringay, La Union in 2020 was 50,379 persons, higher by 2,957 persons from the household population of 47,422 persons in 2015.

In 2020, the number of households was 12,237, higher by 1,420 households compared with the 10,817 households recorded in 2015. The average household size in 2020 was 4.1 persons, lower than the average household size of 4.4 persons in 2015.

Table 2. Household Population, Number of Households, and Average Household Size Aringay, La Union: 2015 and 2020

Census Year	Household Population	Number of Households	Average Household Size
2020	50,379	12,237	4.1
2015	47,422	10,817	4.4

Sources: Philippine Statistics Authority, 2020 Census of Population and Housing and 2015 Census of Population

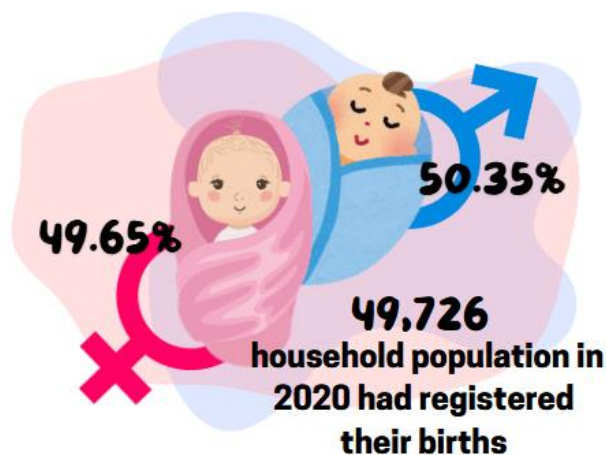
Proportion of persons with registered births in Aringay, La Union is 98.70 percent

The 2020 CPH revealed that 49,726 persons had their births registered at the Local Civil Registry Office (LCRO). This is equivalent to 98.70 percent of the 50,379 household population in 2020.

More males than females have registered births

Among the 49,726 household population whose births were registered at the LCRO, 25,036 persons (50.35 percent) were males, while 24,690 persons (49.65 percent) were females. This translates to a sex ratio of 101 males whose births were registered at the LCRO for every 100 females whose births were also registered. (Figure 7)

Figure 7. Percent Distribution of the Household Population with Registered Births by Sex, Aringay, La Union: 2020



Source: Philippine Statistics Authority, 2020 Census of Population and Housing



TECHNICAL NOTES

<i>Population growth rate</i>	the rate at which the population is increasing (or decreasing) in a given period due to natural increase and net migration, expressed as a percentage of the base population
<i>Total population</i>	the sum of the household population and institutional population. It also includes Filipinos in Philippine embassies, consulates, and missions abroad
<i>Household population</i>	comprises of persons who belong to a household, the basic criterion of which is the usual place of residence or the place where the person usually resides
<i>Household</i>	a social unit consisting of a person living alone or a group of persons who sleep in the same housing unit and have a common arrangement in the preparation and consumption of food
<i>Average household size</i>	the average number of persons who live in the household, computed as the household population in a given area divided by the corresponding total number of households in that area
<i>Head of the household</i>	an adult person, male or female, who is responsible for the organization and care of the household, or who is regarded as such by the members of the household
<i>Sex ratio</i>	the ratio of males to females in a given population, expressed as the number of males per 100 females
<i>Age</i>	the interval of time between a person's date of birth and the census reference date (1 August 2015). Expressed in completed years (as of last birthday), it is recorded in whole number
<i>Median age</i>	the age at which exactly half of the population is younger than this age and the other half is older than it
<i>Overall dependency ratio</i>	the ratio of persons in the dependent ages (under 15 years old and over 64 years old) to persons in the economically active or working ages (15 to 64 years old) in the population
<i>Marital status</i>	the personal status of each individual with reference to the marriage laws or customs of the country
<i>Simple literacy rate</i>	the proportion of persons aged 10 years and over who are able to read and write a simple message in any language or dialect
<i>Highest grade/year completed</i>	the highest grade or year completed in school, college or university



EXPLANATORY NOTES

The total population presented in this release is based on the 2020 CPH. The population count is declared official for all purposes by the President of the Philippines, pursuant to Proclamation No. 1179 dated 06 July 2021. The total population represents the total number of persons living as of 12:01 AM on 01 May 2020 in the country. It also includes Filipinos in Philippine embassies, consulates, and missions abroad.



DANITES E. TEÑIDO, PhD
Chief Statistical Specialist



/KJGH/CAE

