

SPECIAL RELEASE

La Union's Population grows at the rate of 0.94 percent (2020 Census of Population and Housing)

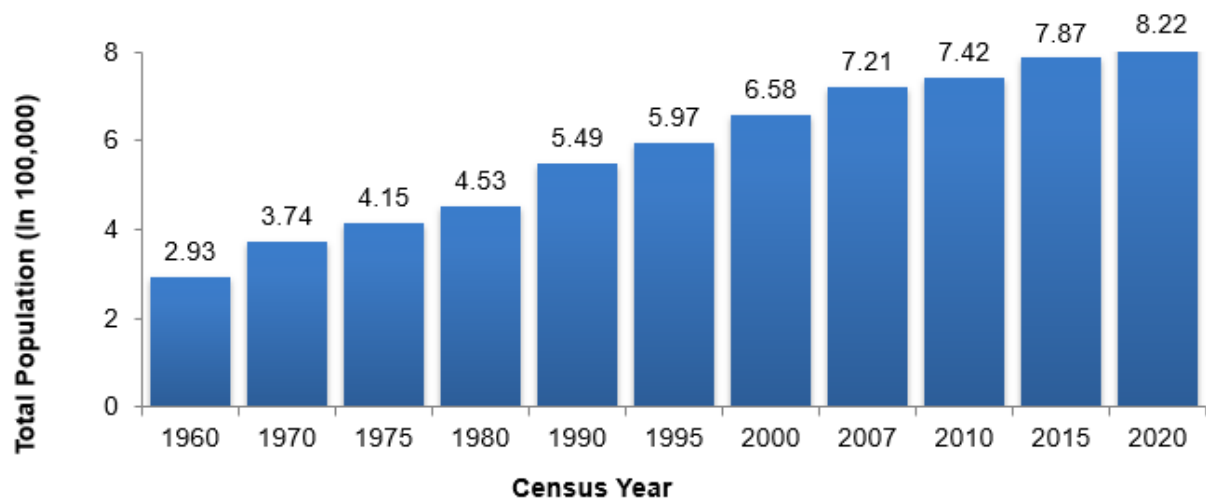
Date of Release: 02 October 2024

Reference No. 2024-54

Total Population increases by 0.94 percent annually

Based on the 2020 Census of Population and Housing (2020 CPH), the province of La Union posted a total population of 822,352 persons as of 01 May 2020. This is an increase of 35,699 persons over the total population of 786,653 persons in 2015 Census of Population (POPCEN). (Figure 1)

Figure 1. Total Population by Censal Year, La Union: 1960 to 2020



Source: Philippine Statistics Authority, 2020 Census of Population and Housing

Population increases by 9 persons per year for every 1,000 persons

The increase in the population count of the province from 2015 to 2020 translated to an average annual population growth rate (PGR) of 0.94 percent. This means that there were about 9 persons added per year for every 1,000 persons in the population. (Figure 2)

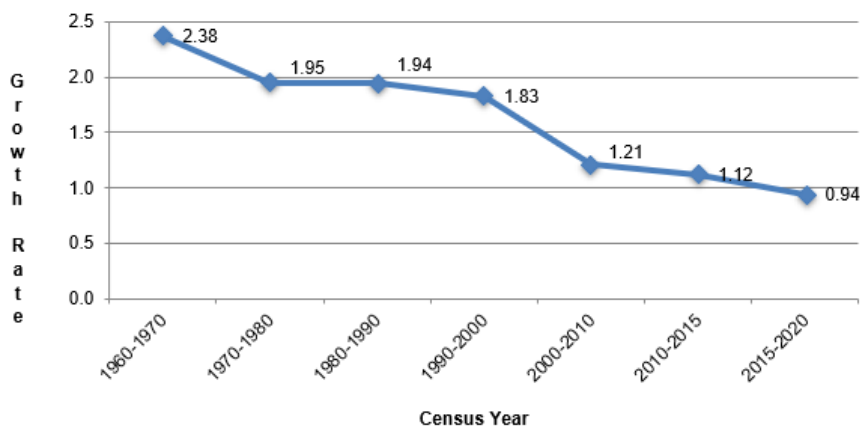
The annual PGR was higher at 1.12 percent during the period 2010 to 2015 and at 1.21 percent during the period 2000 to 2010.

If the average annual PGR recorded at 0.94 percent during the period 2015 to 2020 continues, the population of La Union would double in 74 years.



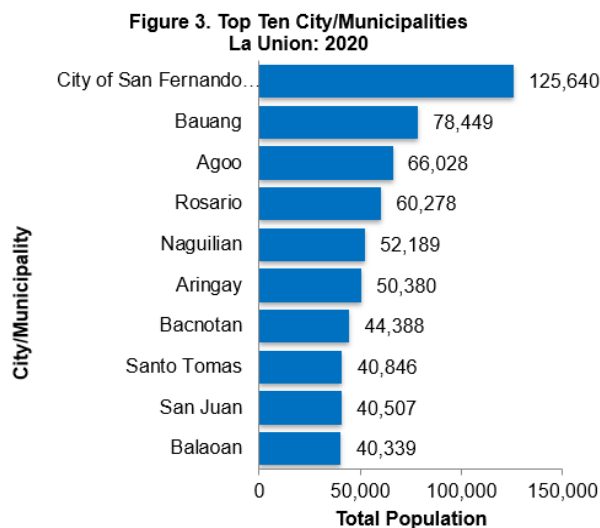
Sixty years ago, the population of La Union was only 293,330 persons. This population size is more than one-third of the population of the province in 2020 CPH.

Figure 2. Intercensal Population Growth Rate, La Union: 1960 to 2020



Source: Philippine Statistics Authority, 2020 Census of Population and Housing

City of San Fernando remain as the most populous in 2020



Source: Philippine Statistics Authority 2020 Census of Population and Housing

Among the 19 municipalities and the lone city of the province of La Union, the City of San Fernando was the most populous with a population size making up 15.97 percent of the total provincial population. The municipality of Bauang was second with 9.97 percent share, followed by the municipalities of Agoo with 8.39 percent share, Rosario with 7.66 percent share, Naguilian with 6.63 percent share and Aringay with 6.40 percent share. The rest of the municipalities contributed less than 6.0 percent each.

The least populated area was the municipality of Burgos with 1.15 percent share to the total population of the province. It was also the least populated area in 2015.

Urban population of La Union increases by 21.5 thousand

In 2020, 173.2 thousand or 21.1 percent of the total 822.3 thousand population of La Union lived in urban barangays. This represents an increase of 21.5 thousand persons from the 151.7 thousand urban residents in 2015. The rural population or those who lived in barangays classified as rural in 2020 comprised the remaining 649.2 thousand persons or 78.9 percent of the total population. (Table 1)

Table 1. Total Population, Urban Population, and Level of Urbanization by City/Municipality, La Union: 2015 and 2020

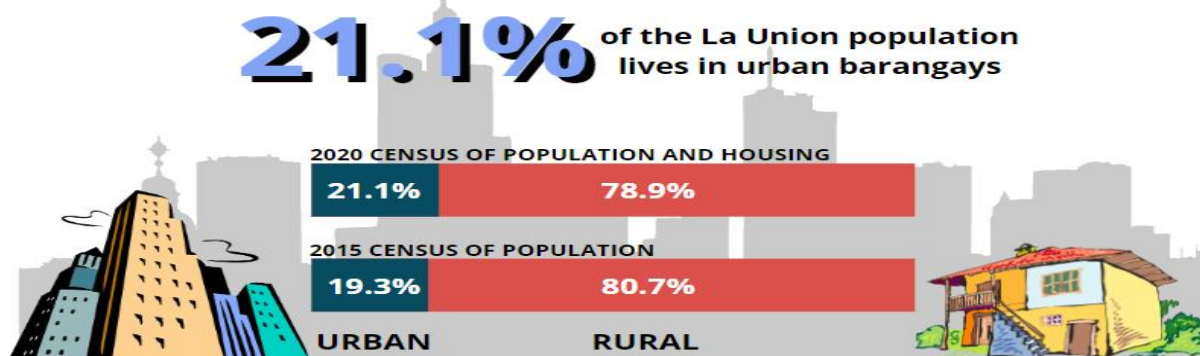
Province City/Municipality	Total Population		Urban Population		Level of Urbanization (Percent)	
	2020	2015	2020	2015	2020	2015
LA UNION	822,352	786,653	173,150	151,700	21.1	19.3
Agoo	66,028	63,692	7,887	18,278	11.9	28.7
Aringay	50,380	47,458	9,070	7,332	18.0	15.4
Bacnotan	44,388	42,078	9,659	6,602	21.8	15.7
Bagulin	14,428	13,456	-	-	-	-
Balaoan	40,339	39,188	1,793	-	4.4	-
Bangar	38,041	35,947	-	-	-	-
Bauang	78,449	75,032	35,967	17,941	45.8	23.9
Burgos	9,006	8,067	-	-	-	-
Caba	23,119	22,039	-	-	-	-
Luna	37,318	35,802	-	-	-	-
Naguilian	52,189	54,221	7,066	3,201	13.5	5.9
Pugo	19,337	19,690	-	2,671	-	13.6
Rosario	60,278	55,458	16,120	17,479	26.7	31.5
City of San Fernando (Capital)	125,640	121,812	66,780	68,228	53.2	56.0
San Gabriel	18,943	18,172	-	-	-	-
San Juan	40,507	37,188	10,862	9,968	26.8	26.8
Santo Tomas	40,846	39,092	3,405	-	8.3	-
Santol	14,166	12,476	-	-	-	-
Sudipen	17,187	17,056	-	-	-	-
Tubao	31,763	28,729	4,541	-	14.3	-

Sources: Philippine Statistics Authority, 2020 Census of Population and Housing and 2015 Census of Population

Level of urbanization improves by 1.8 percentage points

The level of urbanization or the proportion of the total population living in barangays classified as urban was recorded at 21.1 percent in 2020. This is 1.8 percentage points higher than the 19.3 percent level of urbanization in 2015. (Figure 4)

Figure 4. Proportion of Urban and Rural Population
La Union: 2015 and 2020

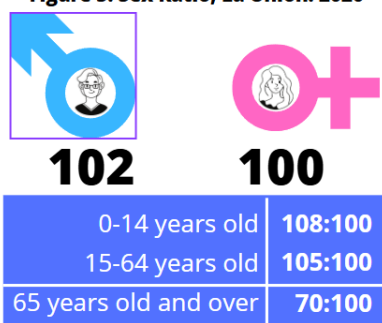


Sources: Philippine Statistics Authority, 2020 Census of Population and Housing and 2015 Census of Population

City of San Fernando ranks first in terms of level of urbanization in the province

Of the 20 city/municipalities of La Union, five city/municipalities registered a level of urbanization higher than the provincial level in 2020 (21.1%). City of San Fernando topped the list with 53.2 percent level of urbanization, followed by Bauang (45.8%), San Juan (26.8%), Rosario (26.7%), and Bacnotan (21.8%). (Table 1)

Figure 5. Sex Ratio, La Union: 2020



Source: Philippine Statistics Authority
2020 Census of Population and Housing

Sex ratio remains at 102 males per 100 females

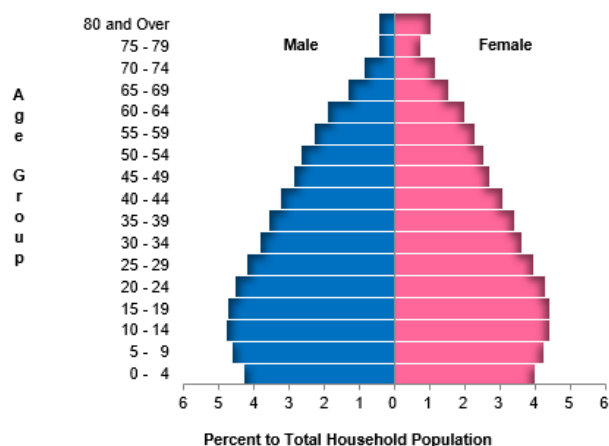
Of the 820,343 household population in 2020, males accounted for 50.57 percent while females comprised 49.43 percent. These figures resulted to a sex ratio of 102 males for every 100 females, the same sex ratio recorded in 2015. (Figure 5)

Median age increases to 28.50 years

In 2020, the median age of the household population of the province was 28.50 years, which means that half of the population was younger than 28.50 years. This is higher than the median age of 27.12 years that was recorded in 2015.

Children aged 10 to 14 years (9.20%) comprised the largest age group, followed by those in the age groups 15 to 19 years (9.15%) and 5 to 9 years (8.86%). Males outnumbered females in the age groups 0 to 54 years. On the other hand, there were more females than males in the older age groups (55 years and over).

Figure 6. Age-Sex Pyramid of Household Population La Union: 2020



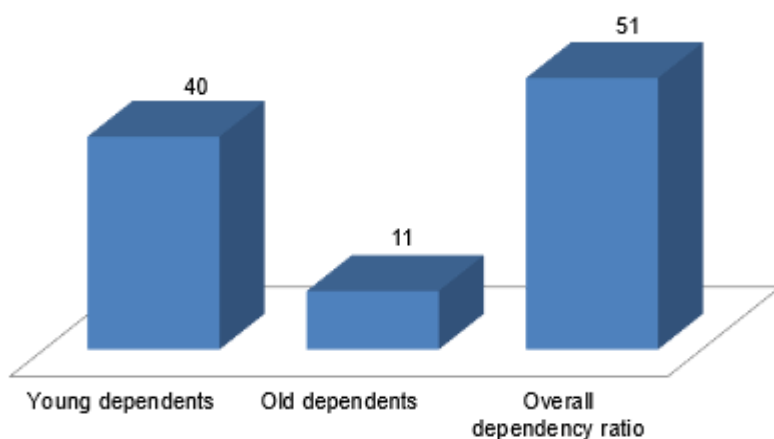
Source: Philippine Statistics Authority
2020 Census of Population and Housing

More than three fifths of the household population are of voting age

The voting-age population (18 years and over) accounted for 68.16 percent of the household population of the province in 2020, up from 65.92 percent in 2015. There were more females (50.06%) than males (49.94%) among the voting-age population.

Dependency ratio decreases to 51 dependents per 100 persons in the working age group

Figure 7. Dependency Ratio
La Union: 2020



Source: Philippine Statistics Authority, 2020 Census of Population and Housing

In 2020, the young dependents (0 to 14 years) comprised 26.34 percent of the household population while the old dependents (65 years and over) posted a share of 7.61 percent. The working age population (15 to 64 years) accounted for the remaining 66.06 percent.

The overall dependency ratio was 51, which indicates that for every 100 working age

population, there were about 51 dependents (40 young dependents and 11 old dependents). This ratio is lower than the dependency ratio in 2015, which was recorded at 54 dependents per 100 working age population.

Males dominate females among the never-married persons

Of the household population 10 years old and over, 41.30 percent were married while 37.65 percent were never married. The rest of the population were categorized as follows: widowed (5.48%), common-law/live-in marital arrangement (13.44%), and divorced/separated (2.13%).

Among the never-married persons, 55.06 percent were males while 44.94 percent were females.

More females than males attained higher levels of education

Of the household population five years old and over, 24.59 percent had attended or completed elementary education while 41.29 percent had reached or finished high school. Moreover, 9.88 percent were college undergraduates and 15.95 percent were academic degree holders.

Among those with an academic degree, the females (57.13%) outnumbered the males (42.87%). Similarly, more females (64.29%) than males (35.71%) had pursued post baccalaureate courses.

Literacy rate was recorded at 99.01 percent

La Union posted a literacy rate of 99.01 percent among the 752,442 household population aged 5 years and over. Literacy rate was slightly higher among males (50.45%) than among females (49.55%).

Majority of La Union’s household population are Roman Catholics

Among the household population in La Union in 2020, 84.83 percent reported Roman Catholic as their religious affiliation. The next largest religious affiliation in the province was the Iglesia ni Cristo with 2.85 percent followed by Other Religious Affiliation with 1.89 percent and United Church of Christ in the Philippines with 1.38 percent.

Female overseas workers outnumbered their male counterpart

Of the 604,303 household population 15 years old and over in La Union, 5.45 percent (32,912 persons) were overseas workers. Female overseas workers outnumbered their male counterpart with a total share of 59.94 percent of all the overseas workers in La Union. Overseas workers aged 45 years and over made up the largest age group, comprising 27.16 percent of the total overseas workers in the province, followed by those in the age groups 30 to 34 years (18.62%), 35 to 39 years (16.85%), and 25 to 29 years (15.26%).

Average household size is 4.0 persons

The household population of La Union in 2020 was 820,343 persons, higher by 35,697 persons from the household population of 784,646 persons in 2015.

The number of households in 2020 was recorded at 205,034, higher by 24,359 households compared with the 180,675 households posted in 2015. The average household size in 2020 was 4.0 persons, lower than the average household size of 4.3 persons in 2015.

**Table 2. Household Population, Number of Households, and Average Household Size
La Union: 2015 and 2020**

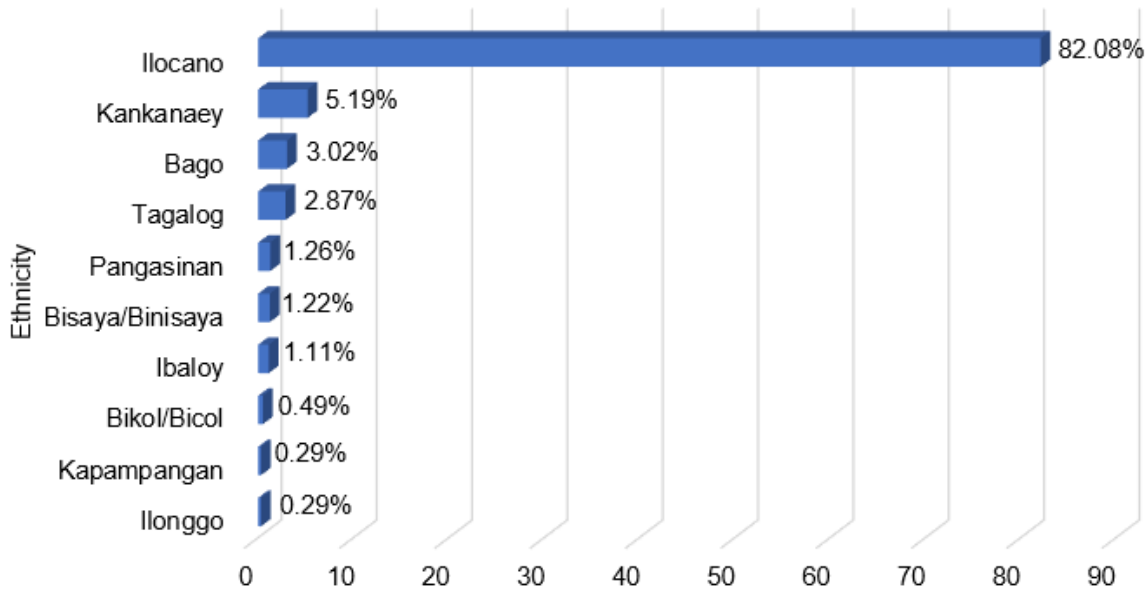
Census Year	Household Population	Number of Households	Average Household Size
2020	820,343	205,034	4.0
2015	784,646	180,675	4.3

Sources: Philippine Statistics Authority, 2015 Census of Population and 2020 Census of Population and Housing

About four in every five household population has Ilocano as ethnicity

About four in every five (82.08%) of the 820,343 household population in La Union in 2020 reported Ilocano as their ethnicity. Other major ethnicities were Kankanaey (5.19%), Bago (3.02%), Tagalog (2.87%), Pangasinan (1.26%), and Bisaya/Binisaya (1.22%). (Figure 8)

Figure 8. Top Ethnicities in La Union: 2020



Sources: Philippine Statistics Authority, 2020 Census of Population and Housing

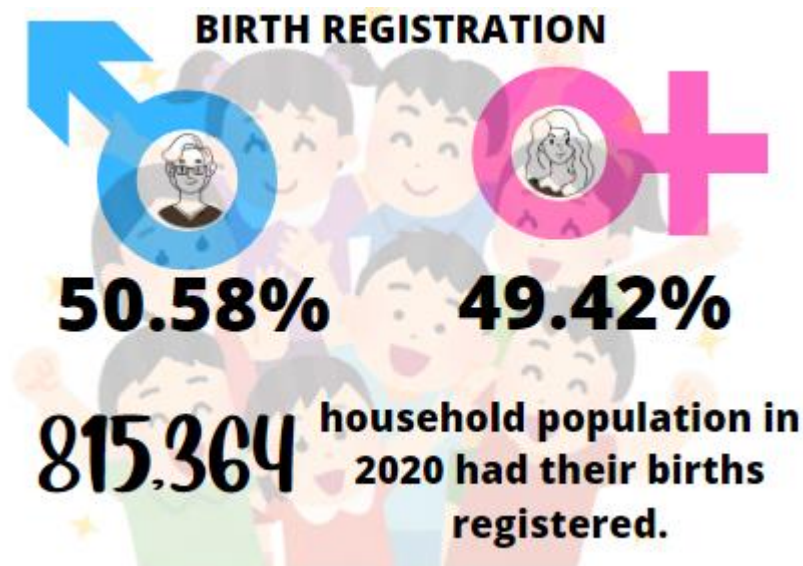
Proportion of persons with registered births in La Union is 99.39 percent

The 2020 CPH revealed that a total of 815,364 persons had their births registered with the Local Civil Registry Offices (LCROs). This is equivalent to 99.39 percent of the 820,343 household population in 2020.

More males than females have registered births

Among the 815,364 household population whose births were registered with the LCRO, 50.58 percent (412,378 persons) were males, while 49.42 percent (402,986 persons) were females. This translates to a sex ratio of 102 males whose births were registered with the LCRO for every 100 females whose births were also registered. (Figure 9)

Figure 9. Distribution of the Household Population with Registered Births by Sex, La Union: 2020



TECHNICAL NOTES

<i>Population growth rate</i>	the rate at which the population is increasing (or decreasing) in a given period due to natural increase and net migration, expressed as a percentage of the base population
<i>Total population</i>	the sum of the household population and institutional population. It also includes Filipinos in Philippine embassies, consulates, and missions abroad
<i>Household population</i>	comprises of persons who belong to a household, the basic criterion of which is the usual place of residence or the place where the person usually resides
<i>Household</i>	a social unit consisting of a person living alone or a group of persons who sleep in the same housing unit and have a common arrangement in the preparation and consumption of food
<i>Average household size</i>	the average number of persons who live in the household, computed as the household population in a given area divided by the corresponding total number of households in that area
<i>Head of the household</i>	an adult person, male or female, who is responsible for the organization and care of the household, or who is regarded as such by the members of the household
<i>Sex ratio</i>	the ratio of males to females in a given population, expressed as the number of males per 100 females
<i>Age</i>	the interval of time between a person's date of birth and the census reference date (1 August 2015). Expressed in completed years (as of last birthday), it is recorded in whole number
<i>Median age</i>	the age at which exactly half of the population is younger than this age and the other half is older than it
<i>Overall dependency ratio</i>	the ratio of persons in the dependent ages (under 15 years old and over 64 years old) to persons in the economically active or working ages (15 to 64 years old) in the population
<i>Marital status</i>	the personal status of each individual with reference to the marriage laws or customs of the country
<i>Religious affiliation</i>	a particular system of beliefs, attitudes, emotions, and behaviors constituting man's relationship with the powers and principalities of the universe
<i>Simple literacy rate</i>	the proportion of persons aged 10 years and over who are able to read and write a simple message in any language or dialect
<i>Highest grade/year completed</i>	the highest grade or year completed in school, college or university
<i>Usual activity/occupation</i>	the kind of job or business, which a person aged 15 years and over was engaged in most of the time during the 12 months preceding the census
<i>Overseas worker</i>	a household member (15 years old and over) who is out of the country due to an overseas employment

EXPLANATORY NOTES

The total population presented in this release is based on the 2020 CPH. The population count is declared official for all purposes by the President of the Philippines, pursuant to Proclamation No. 1179 dated 06 July 2021. The total population represents the total number of persons living as of 12:01 AM on 01 May 2020 in the country. It also includes Filipinos in Philippine embassies, consulates, and missions abroad.



DANITES E. TEÑIDO, PhD
Chief Statistical Specialist

