



SPECIAL RELEASE

Household Population, Number of Household, and Average Household Size of Ilocos Region (2020 Census of Population and Housing)

Date of Release: 27 June 2022

Reference No. 2022-037

Household population of Ilocos Region reaches 5.3 million persons as of May 2020

The Ilocos Region had a total population of 5,301,139 based on the 2020 Census of Population and Housing (2020 CPH) as of 01 May 2020 of which the household population comprised 99.83 percent or 5,292,297 persons. This is 277,675 persons higher than the recorded household population of 5,014,622 persons in 2015, and 549,230 persons higher than the recorded household population of 4,743,067 persons in 2010. (See Table 1 and Figure 1)

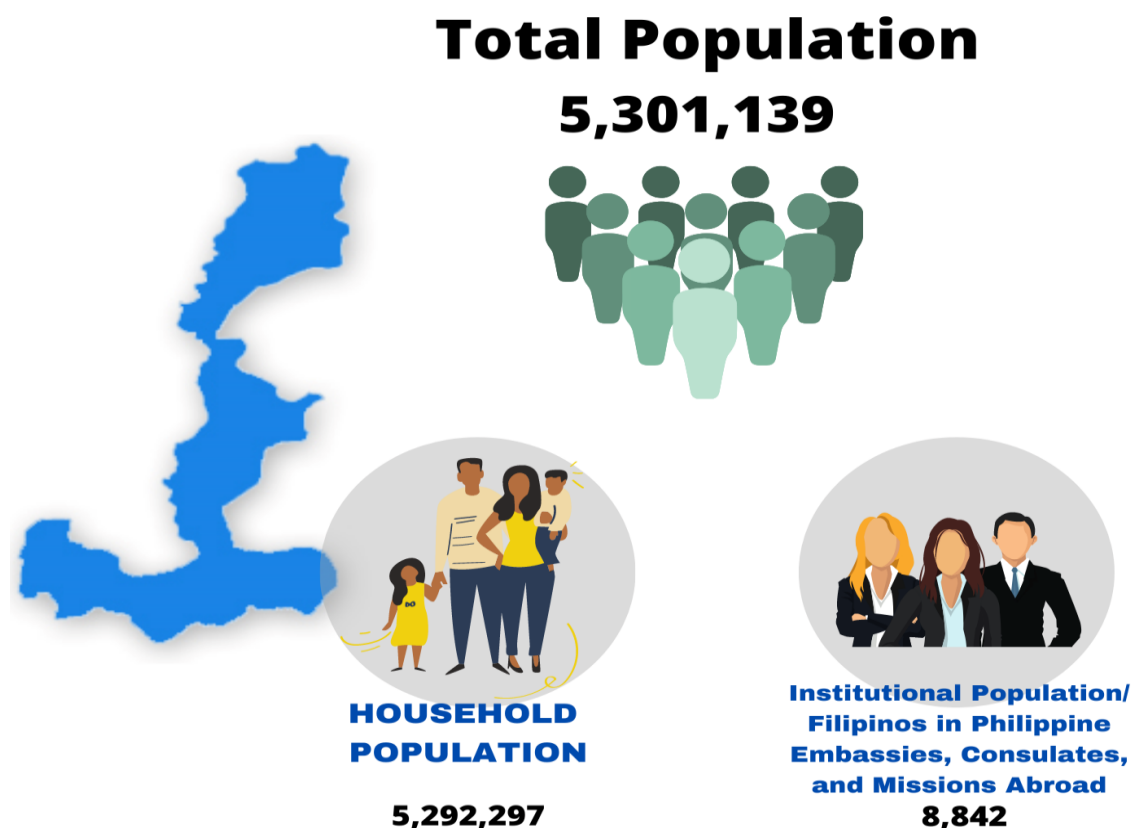
The remaining 0.17 percent or 8,842 persons of the total population comprised the institutional population or those residing in collective or institutional living quarters such as hospitals, orphanages, and military camps; and of Filipinos in Philippine embassies, consulates, and missions abroad. Moreover, it was lower by 2,664 persons in 2015 but higher by 3,537 persons in 2010.

Table 1. Ilocos Region Based on Various Censuses Years

Census Year	Total Population	Household Population	Institutional Population/ Filipinos in Philippine embassies, consulates, and missions abroad
2020	5,301,139	5,292,297	8,842
2015	5,026,128	5,014,622	11,506
2010	4,748,372	4,743,067	5,305



Figure 1. Ilocos Region Population: 2020



Number of Households in Ilocos Region continue to increase over the years

The total number of households in Ilocos Region registered at 1,306,256 in 2020. This is higher by 154, 627 households compared with the 1,151,629 households in 2015, and by 255,651 households compared with 1,050,605 households in 2010. (Refer to Table 2 and Figure 2)

Table 2. Household Population, Number of Households, and Average Household Size Based on Various Census Years Ilocos Region

Census Year	Household Population	Number of Households	Average Household Size
2020	5,292,297	1,306,256	4.1
2015	5,014,622	1,151,629	4.4
2010	4,743,067	1,050,605	4.5

Source: Philippine Statistics Authority, 2010 and 2020 Census of Population and Housing, and 2015 Census of Population

Ilocos Region ranks 7 out of the 17 Administrative Regions

Among the 17 administrative regions, Ilocos Region both ranked seventh in the most number of household population, and most number of households in 2020 with 5,292,297 persons, and 1,306,256 households, respectively. (See Table 3)

About 4.95 percent of the total number of households in Philippines in 2020 resided in Ilocos Region.

Table 3. Household Population, Number of Households, and Average Household Size by Region, 2020

Region	Household Population	Number of Households	Average Household Size
Philippines	108,667,043	26,393,906	4.1
National Capital Region (NCR)	13,403,551	3,499,652	3.8
Cordillera Administrative Region (CAR)	1,791,121	439,166	4.1
I - (Ilocos Region)	5,292,297	1,306,256	4.1
II (Cagayan Valley)	3,679,748	907,472	4.1
III (Central Luzon)	12,387,811	3,040,488	4.1
IV-A (CALABARZON)	16,139,770	4,062,720	4.0
MIMAROPA Region	3,212,287	792,875	4.1
V (Bicol Region)	6,067,290	1,365,044	4.4
VI (Western Visayas)	7,935,531	1,939,989	4.1
VII (Central Visayas)	8,046,285	1,966,588	4.1
VIII (Eastern Visayas)	4,531,512	1,082,106	4.2
IX (Zamboanga Peninsula)	3,862,588	895,899	4.3
Zamboanga del Norte	1,046,017	247,971	4.2
X (Northern Mindanao)	5,007,798	1,197,736	4.2
XI (Davao Region)	5,223,802	1,337,781	3.9
XII (SOCCSKSARGEN)	4,351,773	1,065,453	4.1
XIII (Caraga)	2,795,340	661,773	4.2
Bangsamoro Autonomous Region			
in Muslim Mindanao (BARMM)	4,938,539	832,908	5.9

Note:

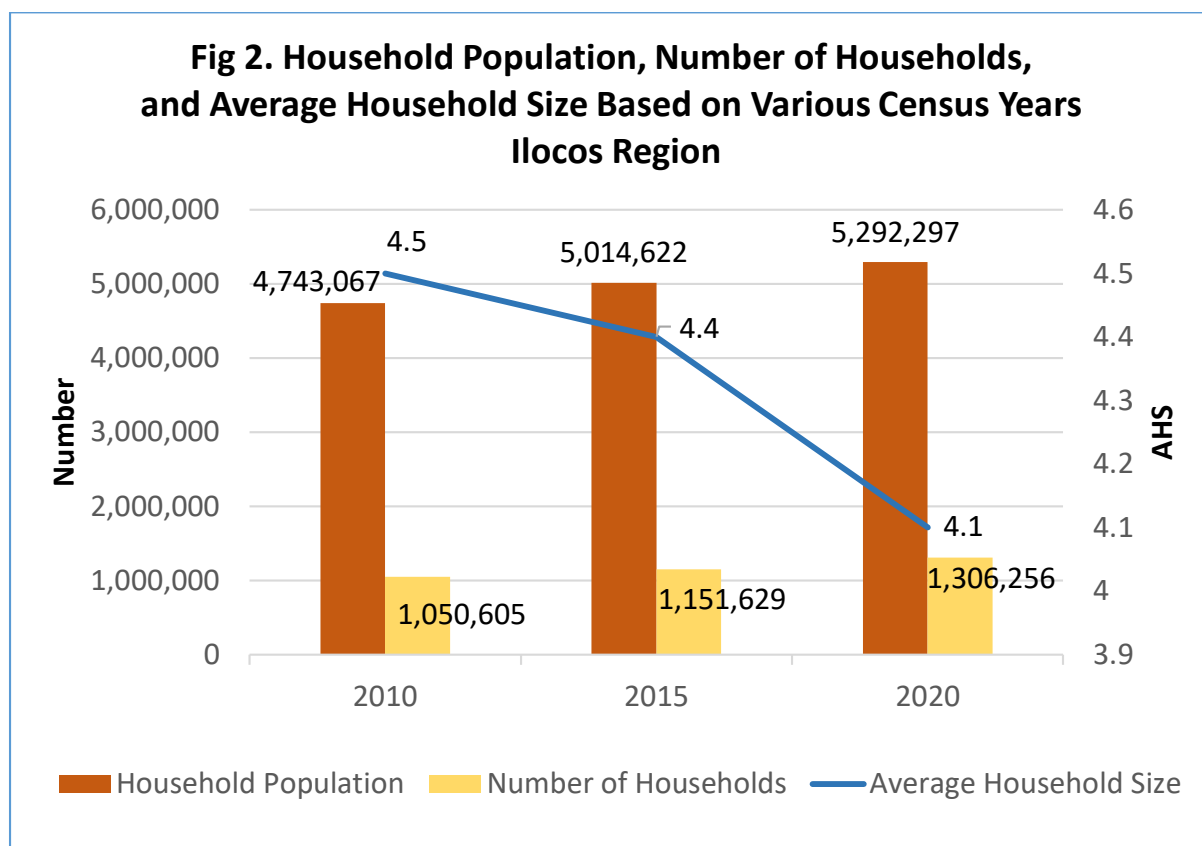
Per PSA Board Resolution No. 13 Series of 2021 –Approving and Adopting the Third Quarter 2021 Philippine Standard Geographic Code Updates to Include the Barangay Autonomous Region in Muslim Mindanao (BARMM) and Correct the Names of 37 Barangays

Source: Philippine Statistics Authority, 2020 Census of Population and Housing

Average Household Size (AHS) of Ilocos Region declines to 4.1 persons in 2020

Ilocos Region recorded an average household size (AHS) of 4.1 persons in 2020. This was lower than the recorded AHS of 4.4 persons in 2015 and the recorded AHS of 4.5 persons in 2010. (Refer to Table 3 and Figure 2)

Six out of the 17 administrative regions posted AHS higher than the national AHS of 4.1 persons. Meanwhile, Ilocos Region posted the same AHS with the national level in 2020.



Source: Philippine Statistics Authority, 2010 and 2020 Census of Population and Housing, and 2015 Census of Population

TECHNICAL NOTES

The **Philippine Statistics Authority (PSA)** conducted the **2020 Census of Population and Housing (CPH)** in **September 2020**. The 2020 CPH was a nationwide government undertaking that involved the collection, compilation, evaluation, analysis, publication, and dissemination of data on population, housing characteristics, household characteristics, and barangay characteristics in each barangay, city/municipality, province, and region in the country. With reference to the first census in 1903, the 2020 CPH was the 15th census of population and the 7th census of housing in the Philippines.

The census of population is the source of data on the size, distribution, and composition of the population. The census of housing, on the other hand, provides information on the supply of housing units and other information on the structural characteristics and facilities that have bearing upon the maintenance of privacy and health and the development of normal family living conditions. These data were collected for different geographic units, that is, from the national down to the barangay level. These information are vital in making rational plans and programs towards national and local development.

Definition of Census Terms and Concepts

A **household** is a social unit consisting of a person living alone or a group of persons who sleep in the same housing unit and have a common arrangement in the preparation and consumption of food.

In most cases, a household consists of persons who are related by kinship ties, such as parents and their children. In other instances, however, several generations of familial ties are represented in one household while, still in other cases, even more distant relatives are included as members of the household.

Some household members may have no relationship to the head of the household, for example helpers, boarders, and nonrelatives. They are considered as members of the household provided that they sleep in the same housing unit and have a common arrangement for the preparation and consumption of food with the household and that they do not go home to their family at least once a week.

A group of unrelated individuals, as in the case of a group of students or

workers who decide to rent a place and make common arrangements for the preparation and consumption of their food, constitutes one household.

Usually, a household is an entire group of persons who customarily live in the same housing unit. However, there are cases when two or more distinct family groups or groups of unrelated persons maintain separate food arrangements even though they share one housing unit. Each of these two or more distinct groups constitutes a household.

A person who shares a housing unit with a household but separately cooks his/her meals or consumes his/her food elsewhere is not considered a member of that household. This person should be listed as a separate (one member) household.

In determining **household membership**, the basic criterion is the usual place of residence or the place where the person usually resides. This may be the same or different from the place he/she is found at the time of the census. As a rule, it is the place where he/she usually sleeps.

Household population comprises of persons who belong to a household.

Institutional Living Quarter (ILQ) is a structurally separate and independent place of abode intended for habitation by large groups of individuals. Such a quarter usually has certain common facilities such as a kitchen and dining room, toilet and bath, and lounging area which are shared by the occupants.

Institutional population comprises of persons who are found living in ILQs. They may have their own families or households elsewhere but at the time of the census, they are committed or confined in ILQ, wherein they are usually subject to a common authority or management or bound by either a common public objective or a common personal interest.


ATTY. SHEILA O. DE GUZMAN
Regional Director, RSSO I


JYY/TBO/DAPR/MNC