

SPECIAL RELEASE

2023 Goat Situation in Ilocos Region

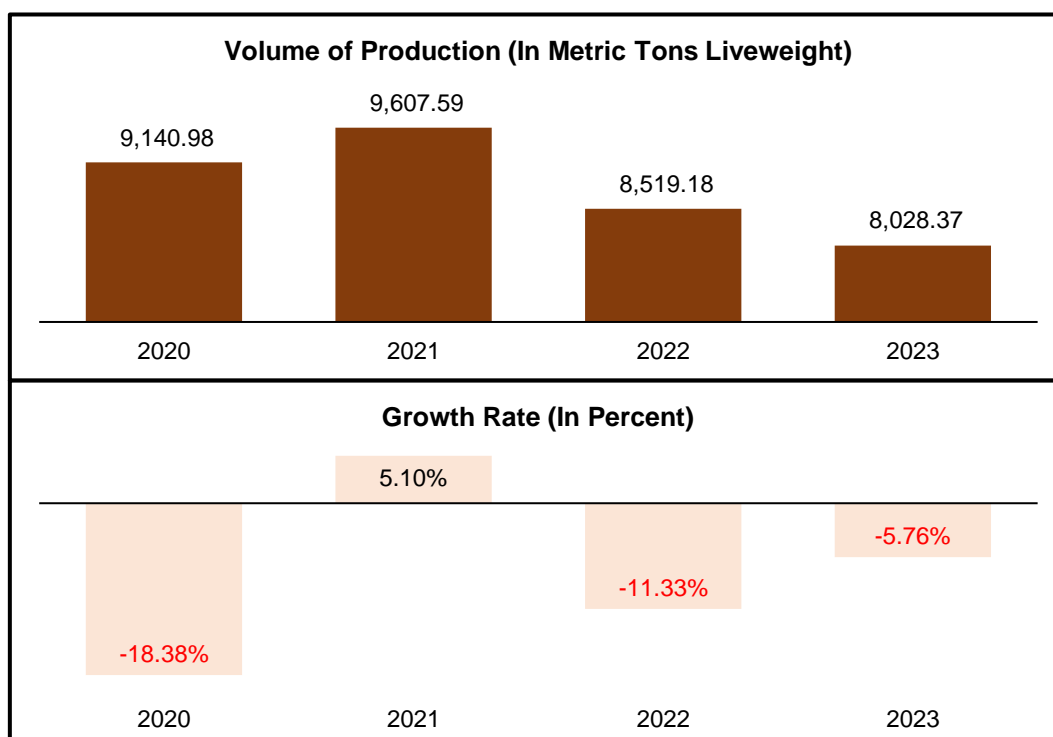
Date of Release: **22 May 2024**

Reference No.: **2024-028**

Goat production in Ilocos Region drops by 5.76 percent

The total goat production in Ilocos Region was estimated at 8,028.37 metric tons liveweight. This was lower than the previous year's output of 8,519.18 metric tons liveweight.

Figure 1. Goat Volume of Production and Annual Growth Rate Ilocos Region: 2020 – 2023^P

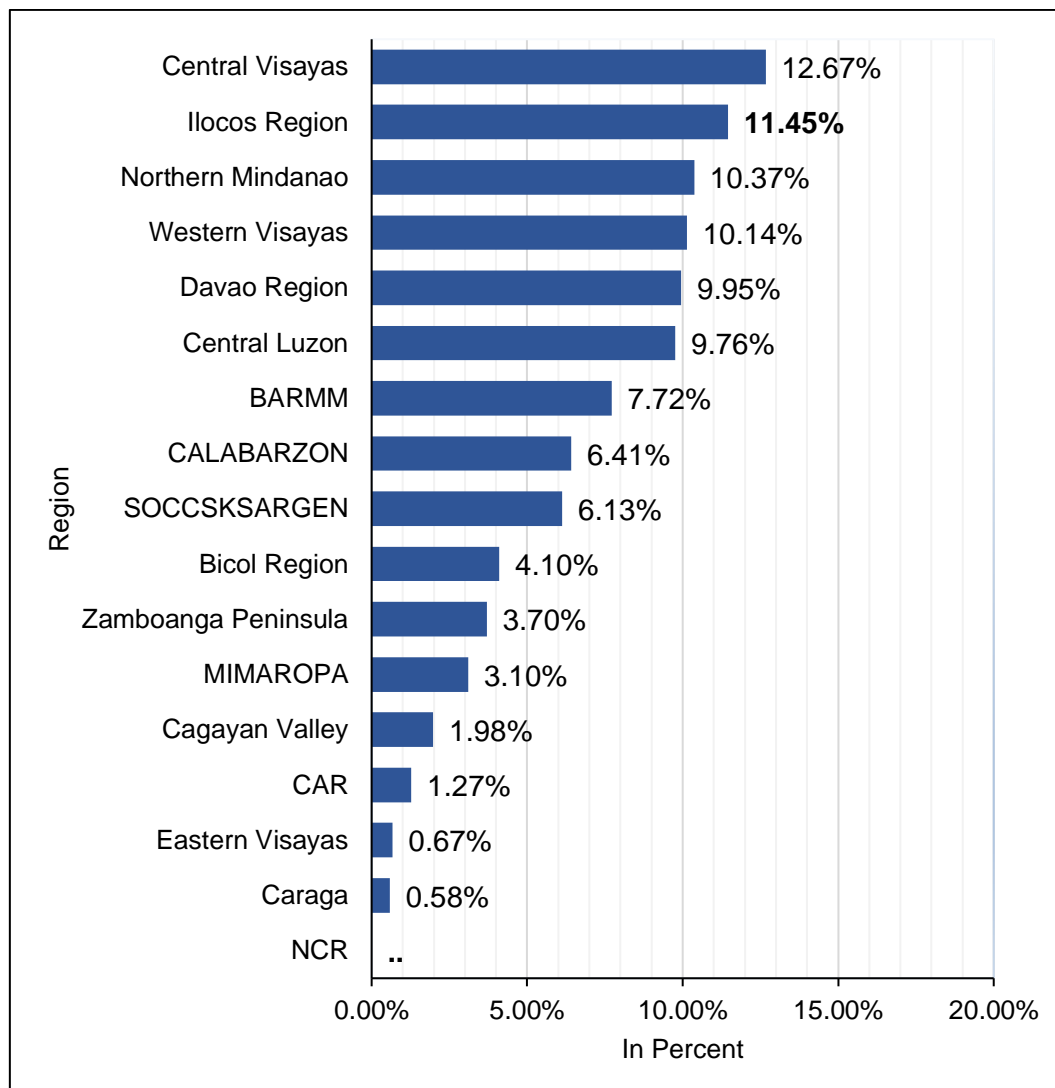


Note: P – preliminary

Source: Philippine Statistics Authority



**Figure 2. Percent Contribution of Goat Production by Region
Philippines: 2022 and 2023^P**

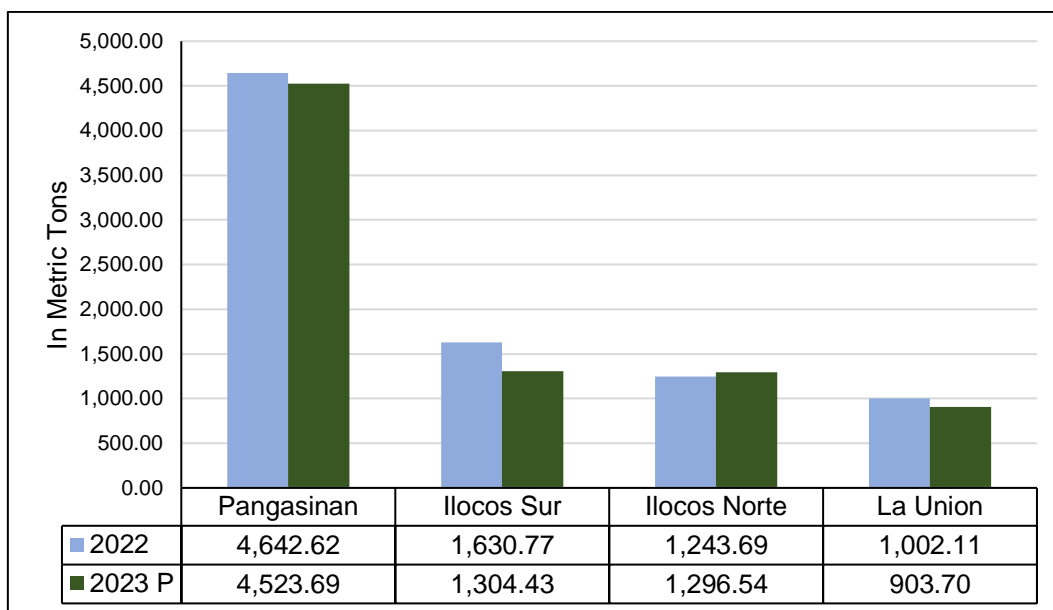


Note: P – preliminary
 .. – not applicable
 Totals may not add up due to rounding.
 Source: Philippine Statistics Authority

The Ilocos Region ranked second among the regions in the country in terms of goat production. It contributed 11.45 percent share to the country’s goat production.



Figure 3. Goat Volume of Production by Province, Ilocos Region 2022 and 2023^P (In Metric Tons)



Note: P – preliminary

Source: Philippine Statistics Authority

Pangasinan posted highest production with 56.35 percent share

By percent share, Pangasinan has the highest production at 4,523.69 metric tons liveweight which was 56.35 percent of the region’s goat production. Also, Ilocos Sur and Ilocos Norte contributed 16.25 percent and 16.15 percent, respectively. La Union has the least contribution with a share of 11.26 percent.

In terms of growth rate, Ilocos Norte increased in production by 4.25 percent in 2023. On the contrary, Ilocos Sur, La Union, and Pangasinan declined by 20.01 percent, 9.82 percent, and 2.56 percent, respectively.



**Table 1. Inventory of Goat (In Heads) by Province, Ilocos Region
2022 and 2023^P (As of 01 January and 01 July)**

Region/Province	2022		2023 ^P		Percent Change	
	01 Jan	01 Jul	01 Jan	01 Jul	01 Jan 2023/2022	01 Jul 2023/2022
Ilocos Region	491,138	428,359	415,864	411,860	-15.33	-3.85
Ilocos Norte	94,026	84,018	89,671	84,485	-4.63	0.56
Ilocos Sur	127,761	110,739	102,026	98,089	-20.14	-11.42
La Union	110,668	114,466	102,476	109,942	-7.40	-3.95
Pangasinan	158,683	119,136	121,691	119,344	-23.31	0.17

Note: P – preliminary

Totals may not add up due to rounding.

Source: Philippine Statistics Authority

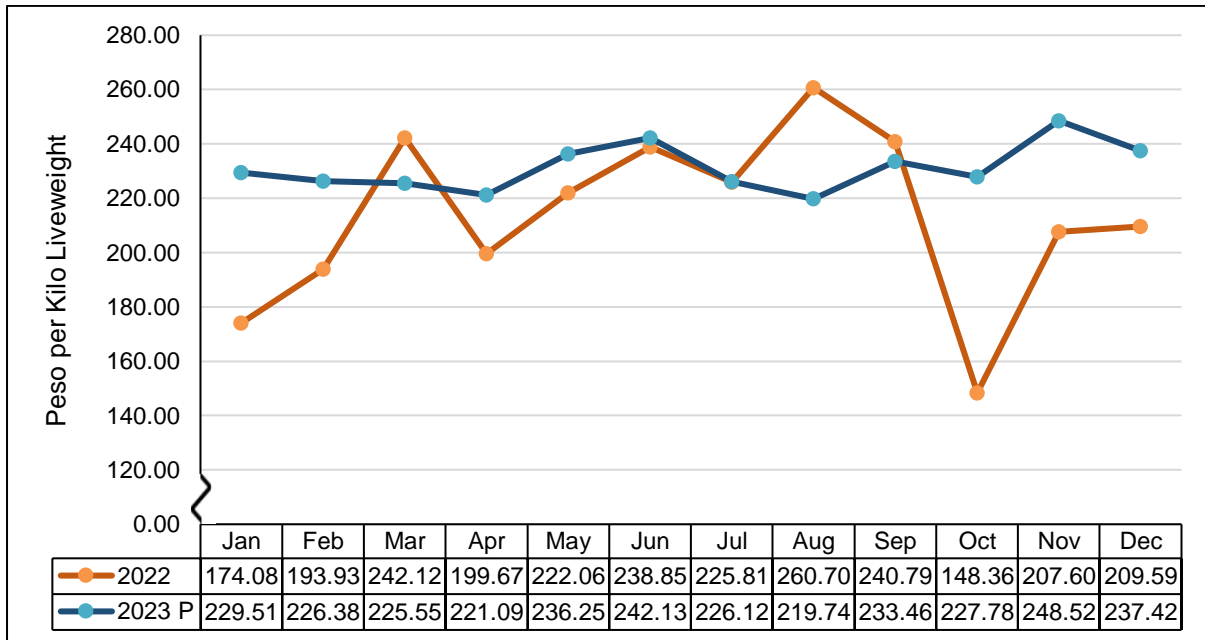
Goat inventory as of 01 January 2023 declined by 15.33 percent

The goat inventory of the region as of 01 January 2023 recorded at 415,864 heads, lower by 15.33 percent compared to the 491,138 total headcount in 2022 of the same reference date.

As of 01 July 2023, the total inventory of goat in the region decreased by 3.85 percent. The decline was contributed by Ilocos Sur and La Union which posted decreases of 11.42 percent and 3.95 percent, respectively. Pangasinan and Ilocos Norte, on the other hand, posted growth in inventory by 0.17 percent and 0.56 percent, respectively.



Figure 4. Monthly Average Farmgate Price of Goat for Slaughter (Backyard), Ilocos Region: 2022 and 2023^P



Note: P- preliminary

Source: Philippine Statistics Authority

Farmgate Price

The average farm price of goat for slaughter in the backyard farms in 2023 was PhP231.16 per kilo liveweight. This was higher by 8.21 percent than the average price of PhP213.63 per kilo liveweight in 2022.

The highest price recorded in 2023 was PhP248.52 per kilo in November.



TECHNICAL NOTES

The data for this report is collected by the PSA through two (2) major surveys, namely the BLPS and the CLPS. Surveys are conducted simultaneously every quarter in all provinces.

Another survey that supplements the data requirements of the sub-sector is the CDSPDP. This covers the Accredited (AAA, AA) and Locally Registered Meat Establishments (LRMEs) nationwide and is undertaken in coordination with the NMIS and PVO of the four provinces.

Concepts and Definitions

- **Livestock** – farm animals kept or raised for consumption and work. For purposes of census and surveys, livestock covers only those that are tended/raised by households/establishments.
- **Volume of Production** – Refers to the number of tended/raised animals disposed for slaughter including animals shipped out for slaughter. This is expressed in metric tons, liveweight.
- **Animal Inventory (also, Animal Population)** – the number of domesticated animals in head present in the farm at specific reference date.
- **Goat** – a domesticated hollow-horned ruminant mammal raised in farms.
- **Farmgate price** – the price received by raisers for their produce at the location of the farm. Thus, marketing costs such as transport and other marketing cost (if any) incurred in selling the produce are not included in the farmgate prices.


ATTY. SHEILA O. DE GUZMAN
Regional Director, RSSO 01 Y


TBO/DAP/PRKT



Parammata Bldg. C, Diversion Rd., Biday, City of San Fernando, La Union
Telephone: (072) 607 – 0247 / 888 – 2582
rso01.psa.gov.ph