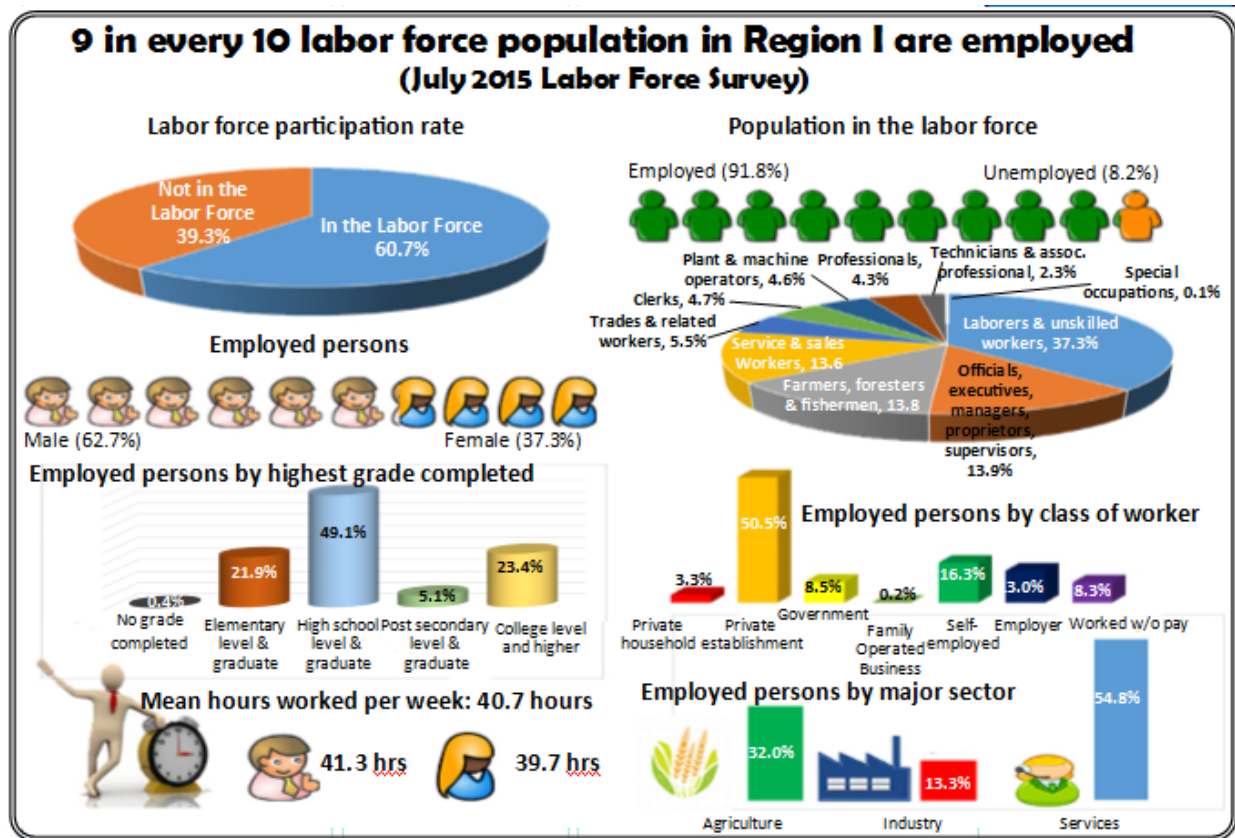




SPECIAL RELEASE

Issue No. 10, Series of 2016

May 2016



The results of the July 2015 Labor Force Survey (LFS) revealed an employment rate of 91.8 percent for Ilocos Region. This was 0.4 percentage point lower than the 92.2 percent employment rate recorded in July 2014. The employment rate of the region was lower than the 93.5 percent employment rate of the Philippines. In terms of the labor force participation rate (LFPR) in Ilocos Region posted a decline of 0.5 percentage point from 61.2 percent in July 2014 to 60.7 percent in July 2015. This was lower than the country's LFPR of 62.9 percent in July 2015.

Table 1. Employment Indicators, Philippines and Ilocos Region: July 2015 and July 2014 LFS

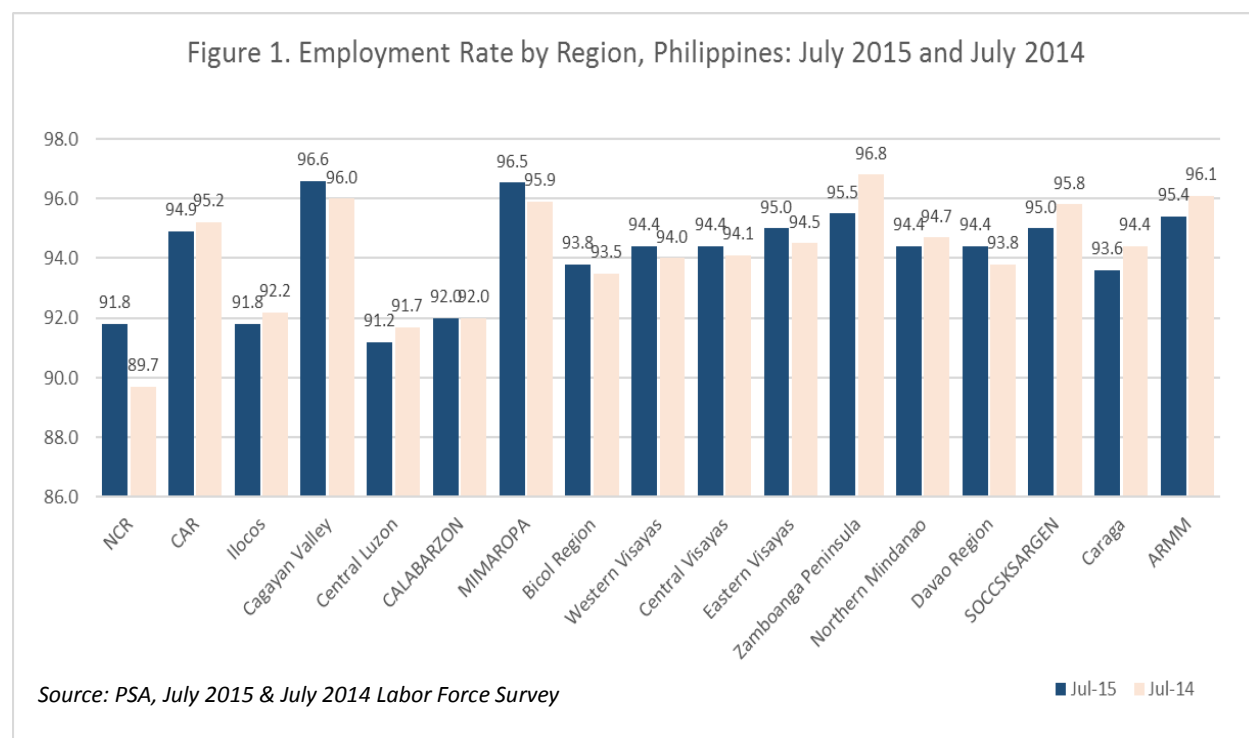
INDICATORS	Philippines		Region 1	
	July 2015 ^{1/}	July 2014 ^{1/}	July 2015	July 2014
Population 15 years and over (in 000) ^{2/}	66,613	64,070	3,602	3,558
Labor Force Participation Rate (%)	62.9	64.4	60.7	61.2
Employment Rate (%)	93.5	93.3	91.8	92.2
Unemployment Rate (%)	6.5	6.7	8.2	7.8

^{1/}The province of Leyte was not covered

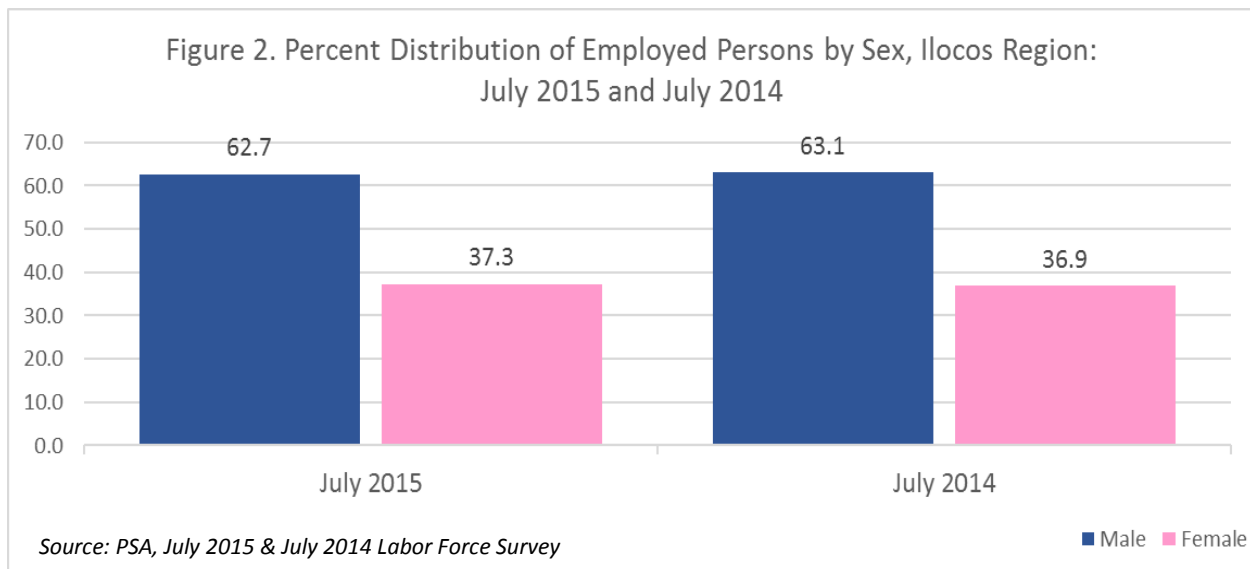
^{2/}Population 15 years old and over is from 2000 Census-based population projections

Source: Philippine Statistics Authority, July 2015 and July 2014 Labor Force Survey

Among the regions, Central Luzon (Region III) recorded the lowest employment rate of 91.2 percent in July 2015. On the other hand, Cagayan Valley (Region II) had the highest employment rate of 96.6 percent. Meanwhile, the employment rate of Ilocos Region during the period was the same as the employment rate of the National Capital Region (NCR), and next lowest to Central Luzon (Region III).



There was a decrease of 0.4 percentage point in the percentage of employed males in Ilocos Region from 63.1 percent in July 2014 to 62.7 percent in July 2015. On the other hand, an increase of 0.4 percentage point was recorded among the employed females, from 36.9 percent in July 2014 to 37.3 percent in July 2015.



By education, 49.1 percent of the employed persons in the Ilocos Region attained high school, which was higher by 8.5 percentage points than the 40.6 percent recorded for the whole country.

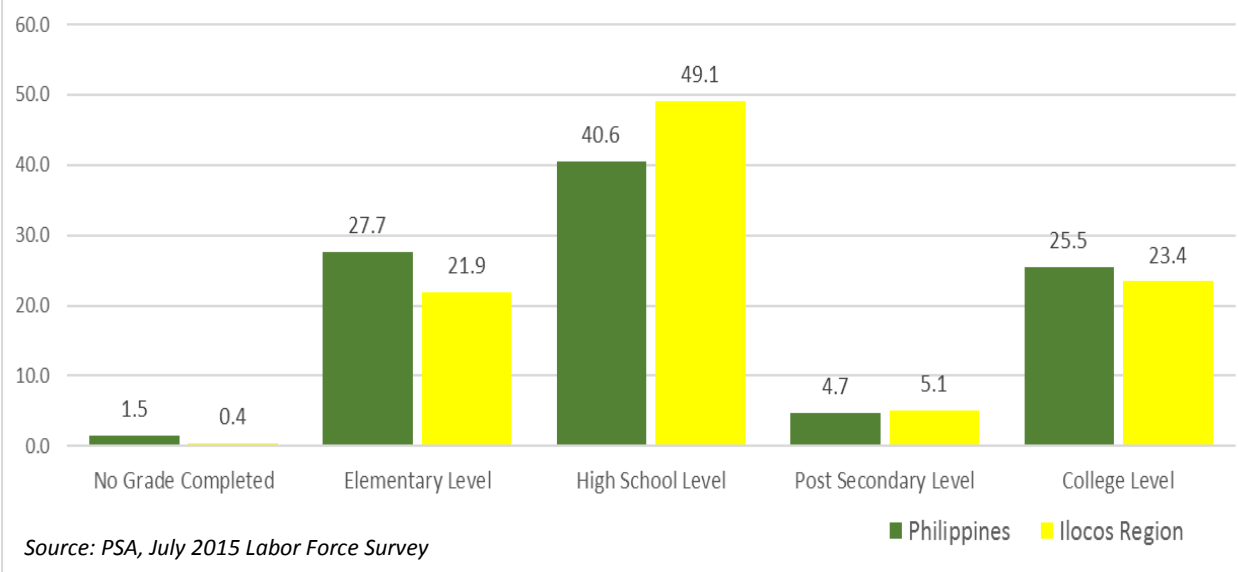
About 23.4 percent of the employed persons in Ilocos Region reached college level, which was lower by 2.1 percentage points from the Philippines figure of 25.5 percent in July 2015.

On the other hand, about 5.1 percent of the employed persons in Ilocos Region attained post-secondary level, which was 0.4 percentage point higher than the 4.7 percent recorded for the whole country.

About 21.9 percent of the employed persons in Ilocos Region attained elementary level, lower by 5.8 percentage points with that of the Philippines, which was posted at 27.7 percent.

The percentage of employed persons in Ilocos Region with no grade completed was only 0.4 percent, lower by 1.1 percentage points as compared to the 1.5 percent recorded for the Philippines.

Figure 3. Percent Distribution of Employed Persons by Highest Grade Completed, Philippines and Ilocos Region: July 2015

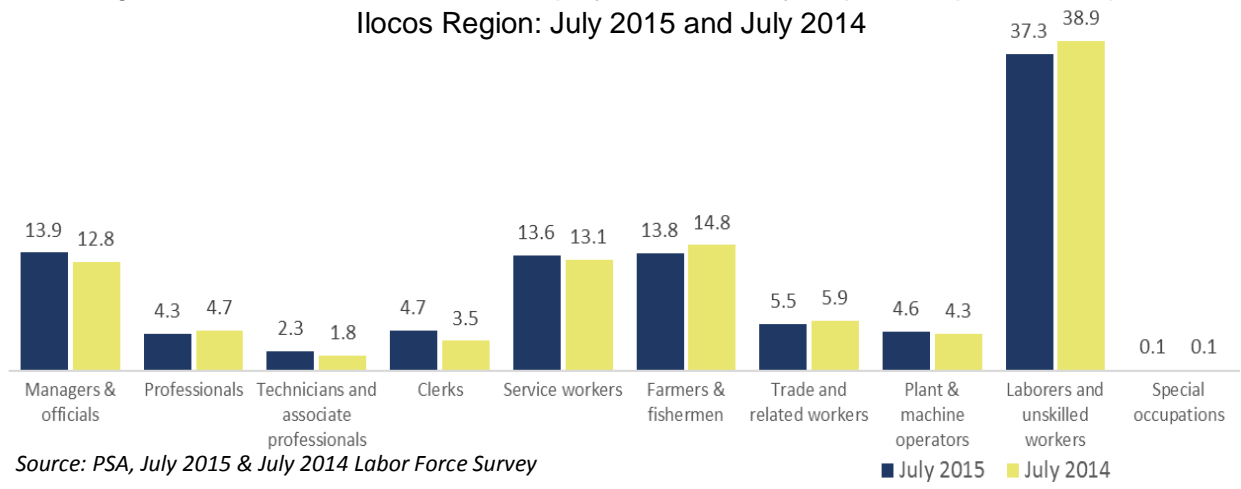


Among the various occupation groups, the laborers and unskilled workers comprised the biggest group making up more than one-third of the total employed persons in July 2015 and July 2014, at 37.3 percent and 38.9 percent, respectively.

Officials of the government and special interest organizations, corporate executives, managers, managing proprietors and supervisors made up the second largest occupation group accounting for 13.9 percent in July 2015. This occupation group was fourth in July 2014 with 12.8 percent of the total employed persons in Ilocos Region.

Farmers and fishermen group was the third biggest in July 2015 with 13.8 percent. This group was second in July 2014 with 14.8 percent.

Figure 4. Percent Distribution of Employed Persons by Major Occupation Group, Ilocos Region: July 2015 and July 2014

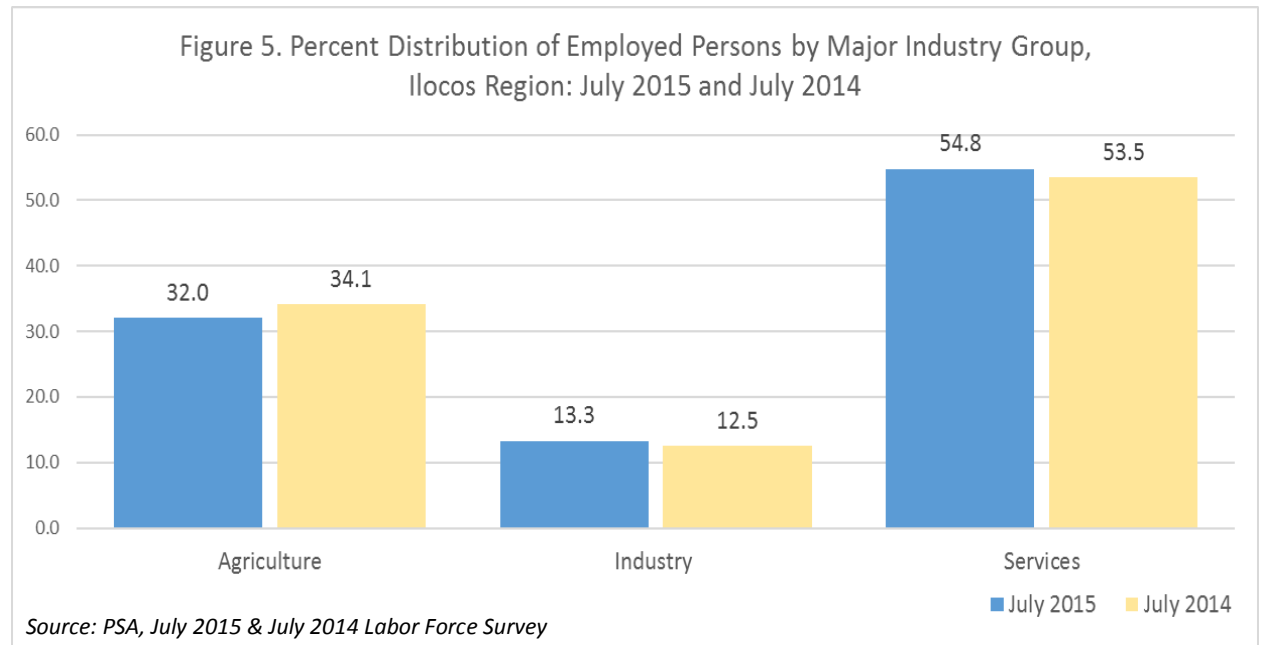


In terms of the percent distribution of employed persons by major industry, workers in the services sector accounted the largest group of workers, making up 54.8 percent and 53.5 percent of the total employed in Ilocos Region in July 2015 and July 2014, respectively.

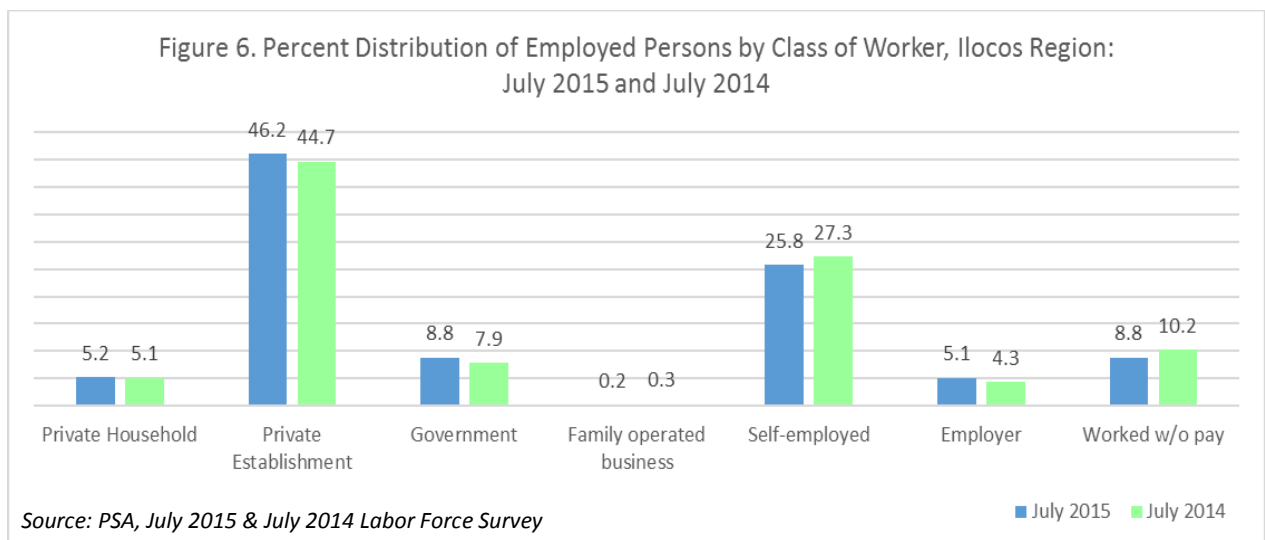
Workers in the agriculture sector, on the other hand, comprised the second largest group in Ilocos Region, accounting for 32.0 percent and 34.1 percent in July 2015 and July 2014, respectively.

Meanwhile, workers in the industry sector made up 13.3 percent of the total number of employed persons in Ilocos Region in July 2015, and 12.5 percent in July 2014.

Figure 5. Percent Distribution of Employed Persons by Major Industry Group, Ilocos Region: July 2015 and July 2014



Almost half (46.2%) of the employed persons in Ilocos Region worked for private establishments in July 2015. This was slightly higher than the figure obtained in July 2014 with 44.7 percent. Self-employed individuals ranked second with 25.8 percent of the total employed persons in Ilocos Region. This was lower by 1.5 percentage points as compared to July 2014 with 27.3 percent. The third biggest class of workers in July 2015 were those in government and those who worked without pay in their own family operated farm or business with a share of 8.8 percent each. On the other hand, the proportion of individuals who worked for private households in July 2015 was 5.2 percent as compared to 5.1 percent in July 2014. Only 0.2 percent were individuals who operated their own business without any paid employee.



The average number of hours worked per week of employed persons in Ilocos Region was 40.7 hours. Male workers tend to have longer average number of working hours per week (41.3 hours) than their female counterparts (39.7 hours). It can also be noted that larger proportion of employed males worked 20 hours or more per week. On the other hand, majority of the employed individuals who did not work during the reference period were males (57.9 percent) as compared to females (42.1 percent).

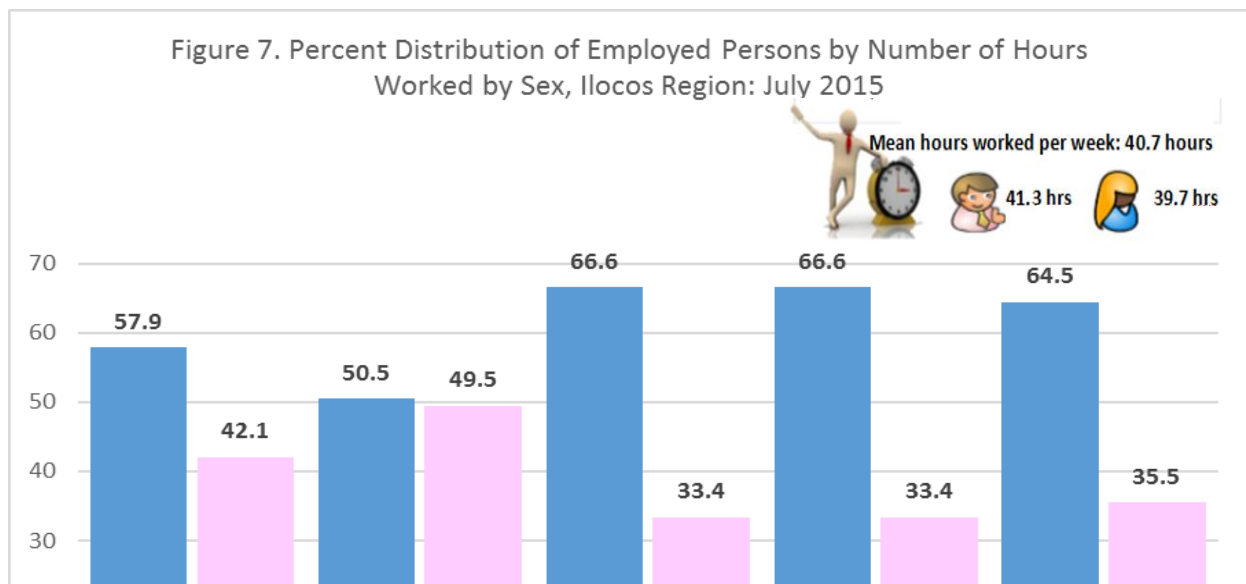
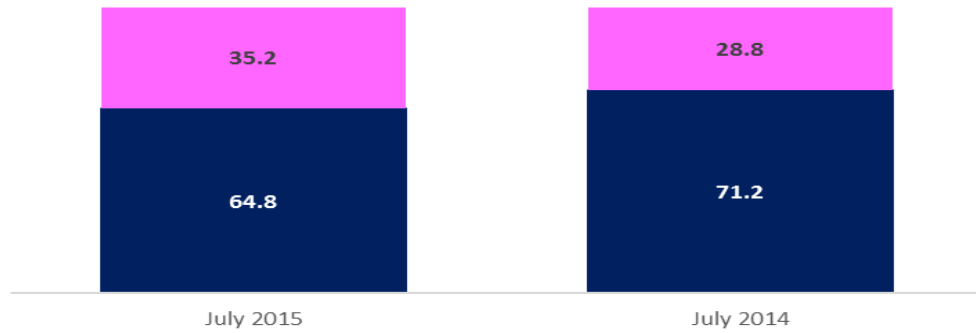


Figure 8. Percent Distribution of Unemployed Persons by Sex, Ilocos Region: July 2015 and July 2014



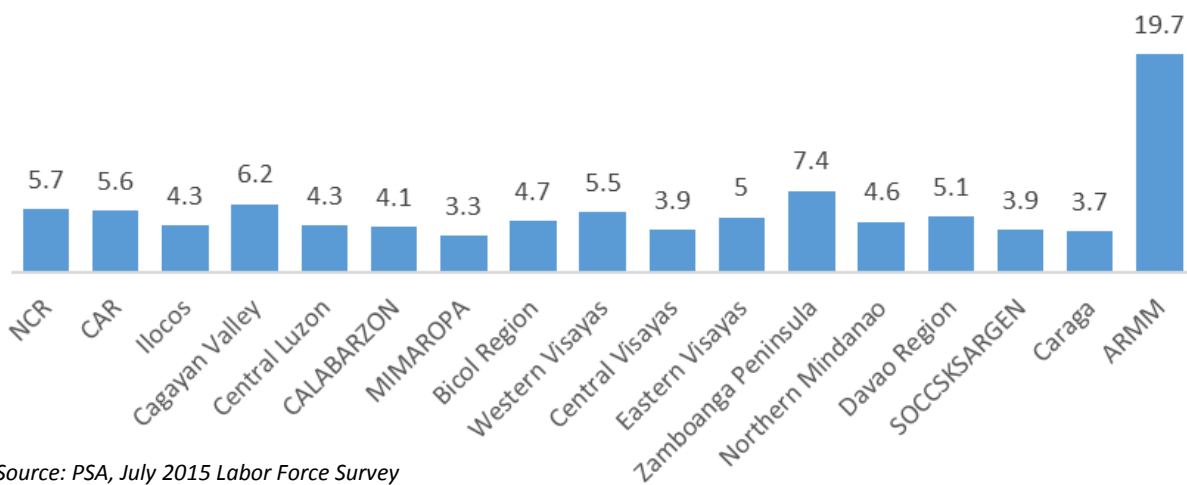
Source: PSA, July 2015 & July 2014 Labor Force Survey

■ Male ■ Female

In July 2015, 64.8 percent of the unemployed persons in Ilocos Region were males and 35.2 percent were females. Compared to the figure in July 2014, the proportion of unemployed females increased by 6.4 percentage points.

In terms of job hunting, unemployed persons in Ilocos Region looked for work for more than a month (4.3 weeks) on the average before landed a job or stopped looking for a job. The shortest duration for job hunting was recorded by MIMAROPA (Region IV-B) with an average of 3.3 weeks, while the longest duration was reported in Autonomous Region in Muslim Mindanao (ARMM) with 19.7 weeks, on the average.

Figure 9. Mean Number of Weeks Looking for Work, by Region: July 2015



Source: PSA, July 2015 Labor Force Survey

Statistical Tables

Table 2. Labor Force Participation, Employment, Unemployment and Underemployment Rates by Region: July 2015.

Region	Total Population 15 years old and Over (in Thousands)	Labor Force Participation Rate	Employment Rate	Unemployment Rate	Under-employment Rate
Philippines	66,613	62.9	93.5	6.5	21.0
NCR	8,292	63.5	91.8	8.2	9.8
CAR	1,188	66.5	94.9	5.1	29.9
I-Ilocos Region	3,602	60.7	91.8	8.2	23.4
II-Cagayan Valley	2,335	65.7	96.6	3.4	12.5
III-Central Luzon	7,312	61.7	91.2	8.8	17.5
IV-A-CALABARZON	8,617	63.7	92.0	8.0	20.1
IV-B-MIMAROPA	2,053	64.7	96.5	3.5	26.0
V-Bicol Region	3,988	62.6	93.8	6.2	33.8
VI-Western Visayas	5,399	62.9	94.4	5.6	24.1
VII-Central Visayas	5,087	65.3	94.4	5.6	20.8
VIII-Eastern Visayas	3,121	59.7	95.0	5.0	27.6
IX-Zamboanga Peninsula	2,307	62.7	95.5	4.5	18.3
X-Norther Mindanao	3,125	64.7	94.4	5.6	23.4
XI-Davao Region	3,180	63.2	94.4	5.6	25.2
XII-SOCCSKSARGEN	2,811	64.2	95.0	5.0	25.8
Caraga	1,772	66.8	94.4	5.6	26.2
ARMM	2,357	54.2	96.1	3.9	12.1

Table 3. Percent Distribution of Population 15 Years Old and Over by Employment Status and Sex, Philippines and Ilocos Region: July 2015

Region and Sex	Total Population 15 years old and Over	Total Labor Force	Employed	Unemployed	Not in the Force Labor
Philippines Number (in thousands)	66,613	41,901	39,177	2,723	24,713
Total	100.0	100.0	100.0	100.0	100.0
Male	50.0	60.5	60.4	62.1	32.1
Female	50.0	39.5	39.6	37.9	67.9
Ilocos Region Number (in thousands)	3,602	2,186	2,007	179	1,416
Total	100.0	100.0	100.0	100.0	100.0
Male	50.7	62.8	62.7	64.8	31.8
Female	49.3	37.2	37.3	35.2	68.2

Table 4. Percent Distribution of Employed Persons by Highest Grade Completed and Sex, Philippines and Region I: July 2015

Region and Sex	Total	Highest Grade Completed								
		No Grade Completed	Elementary		High School		Post-Secondary		College	
			Under Grad	Grad	Under Grad	Grad	Under Grad	Grad	Under Grad	Grad
Philippines (No. in Thousands)	39,177	597	5,590	5,263	4,910	10,988	363	1,483	3,695	6,288
Total	100.0	100.0	100.0	100.0	100.0	100.0	100.0	100.0	100.0	100.0
Male	60.4	65.9	71.9	64.5	65.4	61.7	64.6	53.1	57.3	43.4
Female	39.6	34.1	28.1	35.5	34.6	39.3	35.4	46.9	42.7	56.6
Ilocos Region (No. in Thousands)	2,007	9	152	228	221	765	16	86	161	309
Total	100.0	100.0	100.0	100.0	100.0	100.0	100.0	100.0	100.0	100.0
Male	62.7	46.1	73.1	64.1	68.3	66.9	62.7	51.4	61.8	45.7
Female	37.3	53.9	26.9	35.9	31.7	33.1	37.3	48.6	38.2	54.3

Table 5. Percent Distribution of Employed Persons by Sex and Major Occupation Group, Philippines and Ilocos Region: July 2015

Region and Major Occupation Group	Total	Male	Female
Philippines Numbers (in thousands)	39,177	23,671	15,506
Total	100.0	100.0	100.0
Officials of government and special-interest organizations, corporate executives, managers, managing proprietors, and supervisors	16.4	14.4	19.5
Professionals	5.1	2.8	8.8
Technicians and associate professionals	2.7	2.3	3.4
Clerks	6.4	4.0	10.1
Service workers and shop and market sales worker	12.5	9.9	16.4
Farmers, forestry workers, and fishermen	11.8	16.1	5.2
Trades and related workers	6.9	9.8	2.6
Plant and machine operators and assemblers	5.5	7.8	1.9
Laborers and unskilled workers	32.3	32.5	32.0
Special occupations	0.3	0.4	0.1
Ilocos Region Numbers (in thousands)	2,007	1,258	749
Total	100.0	100.0	100.0
Officials of government and special-interest organizations, corporate executives, managers, managing proprietors, and supervisors	13.9	12.5	16.2
Professionals	4.3	2.0	8.2
Technicians and associate professionals	2.3	1.8	3.1
Clerks	4.7	3.0	7.4
Service workers and shop and market sales worker	13.6	10.2	19.2
Farmers, forestry workers, and fishermen	13.8	19.0	5.1
Trades and related workers	5.5	7.6	1.9
Plant and machine operators and assemblers	4.6	7.0	0.5
Laborers and unskilled workers	37.3	36.7	38.2
Special occupations	0.1	0.2	-

Table 6. Percent Distribution of Employed Persons by Sex and Major Industry Group, Philippines and Ilocos Region: July 2015

Region and Major Occupation Group	Total	Male	Female
Philippines Numbers (in thousands)	39,177	23,671	15,506
Total	100.0	100.0	100.0
Agriculture	24.7	30.1	16.5
Fishing	3.3	4.9	0.8
Mining and quarrying	0.6	0.9	0.1
Manufacturing	8.3	7.6	9.3
Electricity, gas, steam and air conditioning supply	0.2	0.3	0.1
Water supply; sewerage, waste management	0.1	0.2	0.1
Construction	7.3	11.8	0.4
Wholesale and retail trade; repair of motor vehicles	18.5	12.1	28.2
Transportation and storage	7.4	11.8	0.7
Accommodation and food service activities	4.5	3.0	6.7
Information and communication	1.0	1.0	1.0
Financial and insurance activities	1.2	0.9	1.6
Real estate activities	0.5	0.4	0.6
Professional, scientific and technical activities	0.6	0.5	0.7
Administrative and support service activities	2.9	3.0	2.7
Public administration and defense	5.7	5.4	6.3
Education	3.4	1.5	6.2
Human health and social work activities	1.3	0.7	2.3
Arts, entertainment and recreation	0.9	0.9	1.0
Other service activities	7.7	3.0	14.8
Activities of extraterritorial organizations and bodies	0.0	0.0	0.0
Ilocos Region Numbers (in thousands)	2,007	1,258	749
Total	100.0	100.0	100.0
Agriculture	29.4	35.8	18.7
Fishing	2.6	3.5	1.1
Mining and quarrying	0.4	0.5	0.2
Manufacturing	4.6	4.4	5.0
Electricity, gas, steam and air conditioning supply	0.2	0.3	0.1
Water supply; sewerage, waste management	0.2	0.3	0.1
Construction	7.9	12.3	0.4
Wholesale and retail trade; repair of motor vehicles	20.0	13.9	30.2
Transportation and storage	7.5	11.6	0.5
Accommodation and food service activities	3.9	2.6	6.0
Information and communication	1.0	1.0	0.8
Financial and insurance activities	1.2	0.9	1.6
Real estate activities	0.1	0.0	0.1
Professional, scientific and technical activities	0.6	0.6	0.7
Administrative and support service activities	1.4	1.7	0.9
Public administration and defense	5.6	4.5	7.4
Education	3.1	1.5	6.0
Human health and social work activities	1.4	0.8	2.4
Arts, entertainment and recreation	1.2	1.2	1.2
Other service activities	7.8	2.6	16.6
Activities of extraterritorial organizations and bodies	0.0	0.0	0.0

Table 7. Percent Distribution of Employed Persons by Sex and Class of Worker, Philippines and Ilocos Region: July 2015

Region and Major Occupation Group	Total	Male	Female
Philippines Numbers (in thousands)	39,177	23,671	15,506
Total	100.0	100.0	100.0
Wage and salary workers	62.4	64.2	59.7
Worked for private household	5.7	1.5	12.2
Worked for private establishment	47.7	55.5	35.7
Worked for government and government-controlled corporation	8.6	6.7	11.6
Worked with pay on own family-operated farm or business	0.2	0.4	0.2
Self-employed without any paid employee	26.1	25.7	26.7
Employer in own family-operated farm or business	3.4	4.1	2.2
Work without pay on own family-operated farm or business	8.1	5.9	11.3
Ilocos Region Numbers (in thousands)	2,007	1,258	749
Total	100.0	100.0	100.0
Wage and salary workers	60.3	60.7	59.7
Worked for private household	5.2	1.1	12.0
Worked for private establishment	46.2	53.4	34.1
Worked for government and government-controlled corporation	8.8	6.1	13.3
Worked with pay on own family-operated farm or business	0.2	0.2	0.3
Self-employed without any paid employee	25.8	25.8	25.8
Employer in own family-operated farm or business	5.1	6.5	2.6
Work without pay on own family-operated farm or business	8.8	6.9	11.8

Table 8. Percent Distribution of Employed Persons by Total Hours Worked by Sex, Philippines and Region I: July 2015

Region and Sex	Total	Did No Work	Total Hours Worked				Mean Hours Worked
			Under 20	20 – 29	30 – 39	40 and over	
Philippines (No. in Thousands)	39,177	283	5,001	3,873	3,756	26,265	42.4
Total	100.0	100.0	100.0	100.0	100.0	100.0	
Male	60.4	60.9	50.4	60.7	68.5	61.1	42.4
Female	39.6	34.1	28.1	35.5	34.6	39.3	42.7
Ilocos Region (No. in Thousands)	2,007	8	320	217	177	1,286	40.7
Total	100.0	100.0	100.0	100.0	100.0	100.0	
Male	62.7	57.9	50.5	66.6	66.6	64.5	41.3
Female	37.3	42.1	49.5	33.4	33.4	35.5	39.7

Table 9. Percent Distribution of Unemployed Persons Looking for Work by Number of Weeks Looking for Work, Philippines and Region I: July 2015

Region and Sex	Total	Number of Weeks Looking for Work				Mean Number of Weeks Looking for Work
		Less than 4	4 – 9	10 – 19	20 and over	
Philippines (No. in Thousands)	1,306	784	395	76	52	4.8
Total	100.0	100.0	100.0	100.0	100.0	
Male	56.5	56.2	56.4	60.8	55.6	4.7
Female	43.5	43.8	43.6	39.2	44.4	5.0
Ilocos Region (Percent Share to National)	4.9	4.9	5.1	4.0	5.4	4.3

TECHNICAL NOTES

- Starting July 2003, the Labor Force Survey (LFS) adopted the 2003 Master Sample Design, with a sample size of approximately 50,000 households.
- Starting in the January 2012 LFS, the codes for industry adopted the 2009 Philippine Standard Industrial Classification (PSIC). Prior to this, codes for industry used the 1994 PSIC.
- Starting in the January 2012 LFS, more detailed categories for highest grade completed used in the 2010 Census of Population and Housing (CPH) were also adopted.
- Starting in the January 2012 LFS, a question on whether a household member is a graduate of a technical vocational course was asked for each person 15 years or older.
- Starting April 2005, the new unemployment definition was adopted per NSCB Resolution Number 15 dated October 20, 2004. As indicated in the said resolution, the unemployed include all persons who are 15 years and over as of their last birthday and are reported as: (1) without work and currently available for work and seeking work; or (2) without work and currently available for work but not seeking work for the following reasons:
 1. Tired/believed no work available
 2. Awaiting results of previous job application
 3. Temporary illness/disability
 4. Bad weather
 5. Waiting for rehire/job recall
- Starting with the January 2007 LFS round, the population projections based on the 2000 Census of Population and Housing was adopted to generate the labor force statistics. This is in compliance with NSCB Resolution No. 1 series of 2005 entitled *“Adoption of the Methodology Used in Generating the 2000 Census of Population and Housing-Based National Population Projections”*.

For inquiries, visit or call:

**Philippine Statistics Authority
Regional Statistical Services Office I
Statistical Operations and Coordination Division
Sitio 5, Brgy. Biday
San Fernando City, La Union
Telephone No. (072) 607-0247
Email Address: psa_rss01_socd@yahoo.com.ph
www.psa.gov.ph**